

APETUDE

APETUDE is a... (Detailed description of the product's purpose and target audience, including information about its availability and contact details.)

Table with 2 columns: Component and Description. Lists various components and their functions, such as 'APETUDE 100', 'APETUDE 200', and 'APETUDE 300'.

Table with 2 columns: Feature and Description. Lists key features and their benefits, such as 'High Performance', 'Easy to Use', and 'Durable'.

Table with 2 columns: Specification and Value. Lists technical specifications and their corresponding values, such as 'Weight', 'Dimensions', and 'Capacity'.

Table with 2 columns: Usage and Instructions. Lists instructions for using the product, such as 'Installation', 'Operation', and 'Maintenance'.

Table with 2 columns: Warranty and Support. Lists warranty information and customer support details, such as 'Warranty Period' and 'Contact Information'.

Table with 2 columns: Component and Description. Lists various components and their functions, such as 'APETUDE 100', 'APETUDE 200', and 'APETUDE 300'.

Table with 2 columns: Feature and Description. Lists key features and their benefits, such as 'High Performance', 'Easy to Use', and 'Durable'.

Table with 2 columns: Specification and Value. Lists technical specifications and their corresponding values, such as 'Weight', 'Dimensions', and 'Capacity'.

Table with 2 columns: Usage and Instructions. Lists instructions for using the product, such as 'Installation', 'Operation', and 'Maintenance'.

Table with 2 columns: Warranty and Support. Lists warranty information and customer support details, such as 'Warranty Period' and 'Contact Information'.

Table with 2 columns: Warranty and Support. Lists warranty information and customer support details, such as 'Warranty Period' and 'Contact Information'.

Table with 2 columns: Component and Description. Lists various components and their functions, such as 'APETUDE 100', 'APETUDE 200', and 'APETUDE 300'.

Table with 2 columns: Feature and Description. Lists key features and their benefits, such as 'High Performance', 'Easy to Use', and 'Durable'.

Table with 2 columns: Specification and Value. Lists technical specifications and their corresponding values, such as 'Weight', 'Dimensions', and 'Capacity'.

Table with 2 columns: Usage and Instructions. Lists instructions for using the product, such as 'Installation', 'Operation', and 'Maintenance'.

Table with 2 columns: Warranty and Support. Lists warranty information and customer support details, such as 'Warranty Period' and 'Contact Information'.

Table with 2 columns: Warranty and Support. Lists warranty information and customer support details, such as 'Warranty Period' and 'Contact Information'.

Table with 2 columns: Component and Description. Lists various components and their functions, such as 'APETUDE 100', 'APETUDE 200', and 'APETUDE 300'.

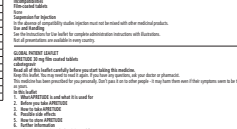
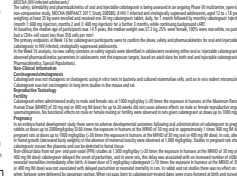
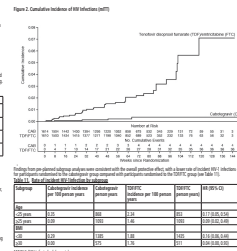
Table with 2 columns: Feature and Description. Lists key features and their benefits, such as 'High Performance', 'Easy to Use', and 'Durable'.

Table with 2 columns: Specification and Value. Lists technical specifications and their corresponding values, such as 'Weight', 'Dimensions', and 'Capacity'.

Table with 2 columns: Usage and Instructions. Lists instructions for using the product, such as 'Installation', 'Operation', and 'Maintenance'.

Table with 2 columns: Warranty and Support. Lists warranty information and customer support details, such as 'Warranty Period' and 'Contact Information'.

Table with 2 columns: Warranty and Support. Lists warranty information and customer support details, such as 'Warranty Period' and 'Contact Information'.



APETUDE is a... (Detailed description of the product's purpose and target audience, including information about its availability and contact details.)

Table with 2 columns: Component and Description. Lists various components and their functions, such as 'APETUDE 100', 'APETUDE 200', and 'APETUDE 300'.

Table with 2 columns: Feature and Description. Lists key features and their benefits, such as 'High Performance', 'Easy to Use', and 'Durable'.

Table with 2 columns: Specification and Value. Lists technical specifications and their corresponding values, such as 'Weight', 'Dimensions', and 'Capacity'.

Table with 2 columns: Usage and Instructions. Lists instructions for using the product, such as 'Installation', 'Operation', and 'Maintenance'.

Table with 2 columns: Warranty and Support. Lists warranty information and customer support details, such as 'Warranty Period' and 'Contact Information'.