

Esketamine

Spravato®
Antidepressant
28 mg Nasal Solution (Spray)

FORMULATION

Each single-use nasal spray device delivers two sprays, one spray into each nostril. Total volume of drug product per device to be delivered is 0.2 mL containing a total of 32.3 mg of esketamine hydrochloride (equivalent to 28 mg of esketamine).

The excipients are Citric acid monohydrate, Edetate disodium, Sodium hydroxide and Water for injection.

The nasal spray is a clear, colorless aqueous solution.

PHARMACOLOGICAL PROPERTIES

Pharmacodynamic Properties

Mechanism of action

Esketamine, the S-enantiomer of racemic ketamine, is an antidepressant with a novel mechanism of action. It is a non-selective, non-competitive antagonist of the *N*-methyl-*D*-aspartate (NMDA) receptor, an ionotropic glutamate receptor.

Putative etiological contributors of depression, including stress and other conditions, are known to cause structural and functional impairment of synapses in brain regions involved with the regulation of mood and emotional behavior. Evidence within the literature suggests that through NMDA receptor antagonism, esketamine produces a transient increase in glutamate release leading to increases in α -amino-3-hydroxy-5-methyl-4-isoxazolepropionic acid receptor (AMPA) stimulation and subsequently to increases in neurotrophic signaling that restore synaptic function in these brain regions. Unlike other antidepressant therapies, esketamine's primary antidepressant action does not directly involve monoamine, GABA, or opioid receptors.

Pharmacodynamic effects

Effect on driving

Two studies were conducted to assess the effects of Esketamine (Spravato®) on driving skills, one study in adult subjects with major depressive disorder and one study in healthy subjects. On-road driving performance was assessed by the mean standard deviation of the lateral position (SDLP), a measure of driving impairment.

A single-blind, placebo-controlled study in 25 adult subjects with major depressive disorder evaluated the effects of a single 84-mg dose of esketamine nasal spray on next day driving. An ethanol-containing beverage was used as a positive control. The SDLP after administration of single 84-mg dose of esketamine nasal spray was similar to placebo. The upper limit of the two-sided 95% confidence interval (CI) of the mean difference between single-dose of esketamine and placebo was 0.58 cm, which is less than the pre-specified non-inferiority margin of 2.4 cm. The lower limit of the 95% CI of the mean difference between ethanol and placebo was 1.03 cm ($p < 0.001$), verifying assay sensitivity.

A randomized, double-blind, cross-over, placebo-controlled study in 23 healthy subjects evaluated the effects of a single 84-mg dose of esketamine nasal spray on driving. Mirtazapine was used as a positive control. Driving performance was assessed at 8 hours after esketamine or mirtazapine administration. The SDLP after esketamine nasal spray administration was similar to placebo. The upper limit of the two-sided

95% CI of the mean difference between esketamine and placebo was 0.86 cm, which is less than the pre-specified non-inferiority margin of 2.4 cm. The lower limit of the 95% CI of the mean difference between mirtazapine and placebo was 1.12 cm ($p=0.001$), verifying assay sensitivity. Of the 23 subjects evaluated, 21 subjects completed the test successfully. Two subjects discontinued the driving test after receiving esketamine because of a perceived inability to drive.

Effect on QT/QTc interval and cardiac electrophysiology

Treatment with Esketamine (Spravato[®]) did not prolong the QTc interval. The effect of Esketamine (Spravato[®]) (84 mg nasal spray and 0.8 mg/kg esketamine intravenously infused over 40 minutes) on the QTc interval was evaluated in a randomized, double-blind, placebo-, and positive-controlled (moxifloxacin 400 mg), 4-period, crossover study in 60 healthy subjects. Maximum esketamine concentrations in plasma produced by the intravenous infusion were approximately 3-times higher than the maximum concentrations produced by the nasal dose of 84 mg. The upper bound of the 90% confidence interval for the largest placebo-adjusted, baseline-corrected QTc interval remained below 10 msec, at all evaluated time-points, based on Fridericia's correction method (QTcF) for both treatment groups.

Clinical studies

The efficacy and safety of Esketamine (Spravato[®]) nasal spray was evaluated in five Phase 3 clinical studies in adult patients (18 to 86 years) with treatment-resistant depression (TRD) who met DSM-5 criteria for major depressive disorder and were non-responders to at least two oral antidepressants (ADs) treatments, of adequate dosage and duration, in the current major depressive episode. 1833 adult patients were enrolled, of which 1601 patients were exposed to Esketamine (Spravato[®]).

Treatment-resistant depression – Short-term studies

Esketamine (Spravato[®]) was evaluated in three Phase 3 short-term (4-week) randomized, double-blind, multicenter, active-controlled studies in patients with TRD. Studies TRANSFORM-1 (TRD3001) and TRANSFORM-2 (TRD3002) were conducted in adults (18 to <65 years) and Study TRANSFORM-3 (TRD3005) was conducted in adults ≥ 65 years of age. Patients in TRD3001 and TRD3002 initiated treatment with Esketamine (Spravato[®]) 56 mg plus a newly initiated daily oral AD or a newly initiated daily oral AD plus placebo nasal spray on Day 1 and Esketamine (Spravato[®]) dosages were then maintained on 56 mg or titrated to 84 mg administered twice-weekly during a 4-week double-blind induction phase. Esketamine (Spravato[®]) doses of 56 mg or 84 mg were fixed in Study TRD3001 and flexible in Study TRD3002. In Study TRD3005, patients (≥ 65 years) initiated treatment with Esketamine (Spravato[®]) 28 mg plus a newly initiated daily oral AD or a newly initiated daily oral AD plus placebo nasal spray (Day 1) which was maintained or titrated to 56 mg or 84 mg dose administered twice-weekly during a 4-week double-blind induction phase. A newly initiated open-label oral AD (SNRI: duloxetine, venlafaxine extended release; SSRI: escitalopram, sertraline) was initiated on Day 1 in all studies. The selection of the newly initiated oral AD was determined by the investigator based on the patient's prior treatment history.

The baseline demographic and disease characteristics of patients in TRD3001 and TRD3002 studies were similar between the Esketamine (Spravato[®]) plus oral AD and oral AD plus placebo nasal spray groups. The median subject age was 47 years (range 18 to 64 years), 67% were female; 83% Caucasian and 5% of African descent and mean duration of prior AD treatment was approximately 425 days. At the time of screening, the mean duration of the current episode of depression was 168 weeks. At the time of screening, 90% of patients had non-response to ≥ 2 oral ADs with the remainder requiring confirmation of non-response to the second AD during the 4-week screening prospective phase. The new open-label oral AD initiated during the 4-week double-blind induction phase was an SSRI in 38% of patients and an SNRI in 62% of patients. In TRD3005, the median subject age was 69 years (range 65 to 86 years) of which, 85%

of patients were 65-74 years of age, 62% were female and 95% were Caucasian and mean duration of prior AD treatment was approximately 727 days. At the time of screening, the mean duration of the current episode of depression was 216 weeks in TRD3005. At the time of screening, 85% of patients had non-response to ≥ 2 oral ADs with the remainder requiring confirmation of non-response to the second AD during the 4-week screening prospective phase. The new open-label AD initiated during the 4-week double-blind induction phase was an SSRI in 55% of patients and an SNRI in 45% of patients.

The primary efficacy measure was change from baseline in the Montgomery-Åsberg Depression Rating Scale (MADRS) total score at the end of the 4-week double-blind induction phase. The MADRS is a ten-item, clinician-rated scale used to assess severity of depressive symptoms. Scores on the MADRS range from 0 to 60, with higher scores indicating more severe depression.

In the flexible dose study TRD3002, for the primary efficacy measure of improvement in depressive symptoms (change in MADRS total scores from baseline at the end of the 4-week induction phase), Esketamine (Spravato[®]) plus a newly initiated oral AD demonstrated clinically meaningful and statistical superiority compared to standard of care (newly initiated oral AD) plus placebo nasal spray. In studies TRD3001 and TRD3005, a clinically meaningful treatment effect in change in MADRS total scores from baseline at the end of the 4-week induction phase was observed favoring Esketamine (Spravato[®]) plus newly initiated oral AD compared with standard of care (newly initiated oral AD) plus placebo nasal spray (Table 1 [MMRM]). In TRD3002, improvements in the Sheehan Disability Scale (SDS) total score assessing global functional impairment and Patient Health Questionnaire-9 (PHQ-9) total score assessing symptoms of depression numerically favored Esketamine (Spravato[®]) plus a newly initiated oral AD compared to standard of care (newly initiated oral AD) plus placebo nasal spray.

Table 1: Primary Efficacy Results for Change in MADRS Total Score for 4 Week Clinical Trials (MMRM)

Study No.	Treatment Group [§]	Number of Patients	Mean Baseline Score (SD)	LS Mean Change from Baseline to end of Week 4 (SE)	LS Mean Difference (95% CI) [†]
TRD3001	Esketamine (Spravato [®]) 56 mg + oral AD	115	37.4 (4.8)	-18.8 (1.3)	-4.1 (-7.7, -0.5) [#]
	Esketamine (Spravato [®]) 84 mg + oral AD	114	37.8 (5.6)	-18.5 (1.4)	-3.2 (-6.9, 0.5) [#]
	Oral AD + Placebo nasal spray	113	37.5 (6.2)	-14.8 (1.3)	-
TRD3002	Esketamine (Spravato [®]) (56 mg or 84 mg) + oral AD	114	37.0 (5.7)	-19.8 (1.3)	-4.0 (-7.3; -0.6) [‡]
	Oral AD + Placebo nasal spray	109	37.3 (5.7)	-15.8 (1.3)	-
TRD3005 (≥65 years)	Esketamine (Spravato [®]) (28 mg, 56 mg or 84 mg) + oral AD	72	35.5 (5.9)	-10.2 (1.5)	-3.6 (-7.2, 0.1) [#]

Oral AD + Placebo nasal spray	65	34.8 (6.4)	-6.2 (1.5)	-
-------------------------------	----	------------	------------	---

SD=standard deviation; SE=standard error; LS Mean=least-squares mean; CI=confidence interval; AD=antidepressant

§ Nasally administered esketamine or placebo; oral AD=standard of care (newly initiated AD)

† Difference (Esketamine (Spravato®) + oral AD minus oral AD + placebo nasal spray) in least-squares mean change from baseline

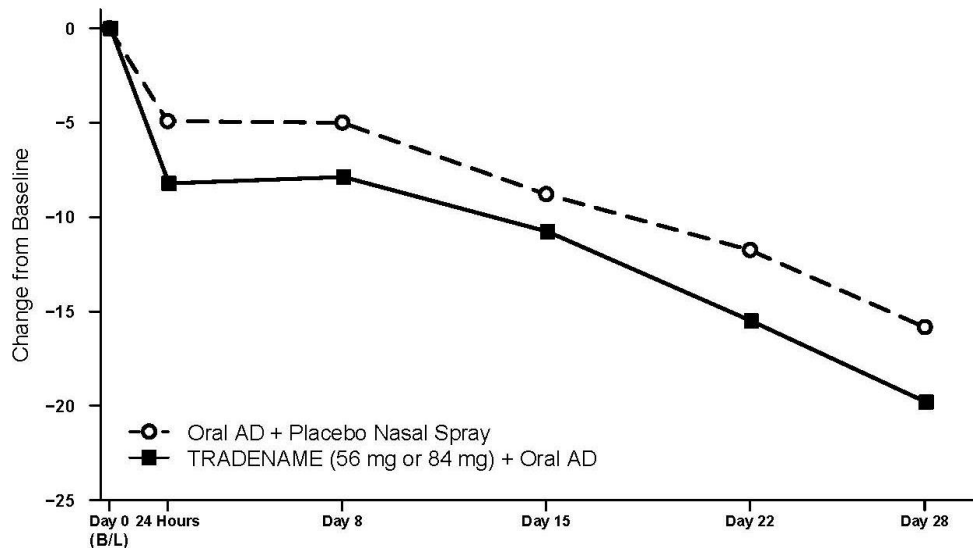
‡ Treatment groups that were statistically significantly superior to oral AD + placebo nasal spray

Median unbiased estimate (i.e., weighted combination of the LS means of the difference from Oral AD + placebo nasal spray), and 95% flexible confidence interval

Time Course of Treatment Response

In Study TRD3002, an effect of Esketamine (Spravato®) on symptom reduction was observed as early as 24 hours post-dose and increased in subsequent weeks with the full antidepressant effect of Esketamine (Spravato®) seen by Day 28. Throughout the 4-week double blind induction phase of Study TRD3002, the mean change in MADRS total score for flexibly dosed Esketamine (Spravato®) (56 mg or 84 mg) plus oral AD was greater than for oral AD plus nasally-administered placebo. At Day 28, 67% of the patients randomized to Esketamine (Spravato®) were on 84 mg. Figure 1 [MMRM Analysis] depicts time course of response in the primary efficacy measure (MADRS) in Study TRD3002. A consistent treatment effect was observed in Studies TRD3001 and TRD3005.

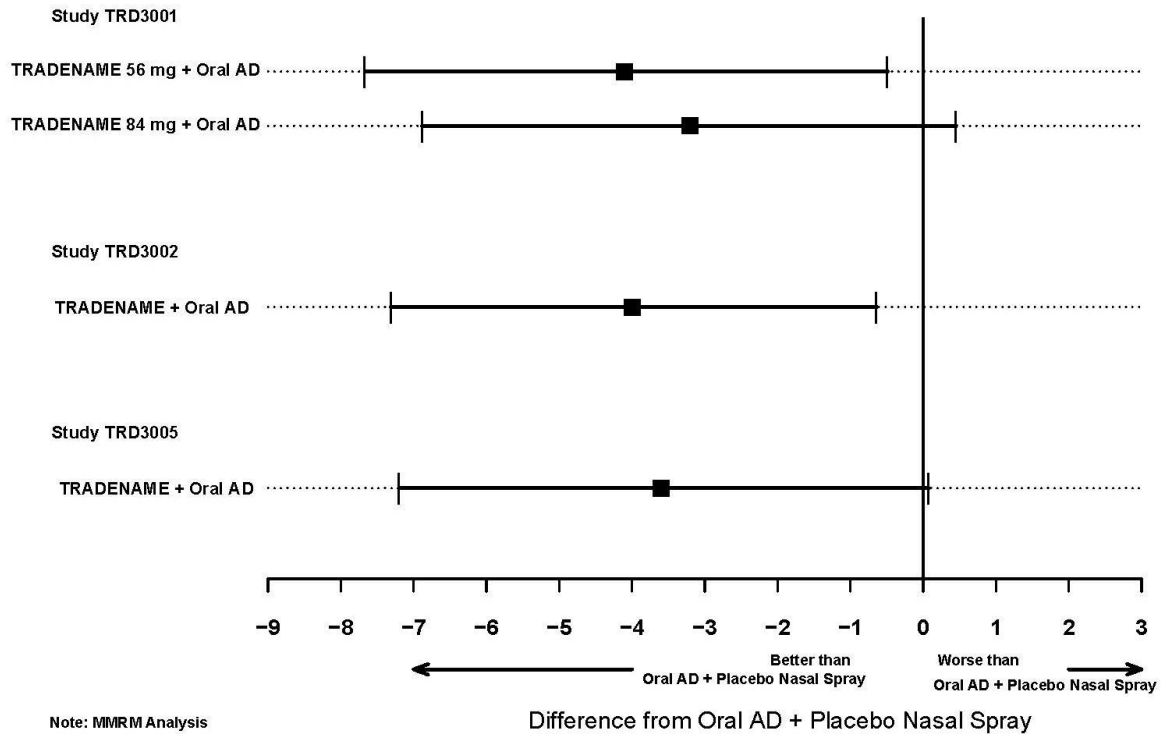
Figure 1: Least Squares Mean Change from Baseline in MADRS Total Score Over Time in Study TRD3002* (Full Analysis Set) – MMRM Analysis



* Note: In this flexible-dose study, dosing was individualized based on efficacy and tolerability. Few subjects (<10%) had reduction in Esketamine (Spravato®) dose from 84 mg to 56 mg, and almost all remained on the lower dose for the duration of the induction phase.

In addition, in TRD3002 study Esketamine (Spravato®) plus oral AD was superior to oral AD plus placebo nasal spray in terms of mean change from baseline in MADRS total score at the end of Week 4. A consistent treatment difference was observed in Studies TRD3001 and TRD3005. (Figure 2 [MMRM]).

Figure 2: Difference from Esketamine (Spravato®) Plus Oral AD vs. Oral AD Plus Placebo Nasal Spray in Mean Change from Baseline in MADRS Total Score at the End of Week 4 (MMRM)



Response and remission rates

Response was defined as $\geq 50\%$ reduction in the MADRS total score from baseline of the induction phase. Based on the reduction in MADRS total score from baseline, the proportion of patients in Studies TRD3001, TRD3002 and TRD3005 who demonstrated response to Esketamine (Spravato®) plus oral AD treatment was greater than for oral AD plus placebo nasal spray throughout the 4-week double-blind induction phase (Table 2).

Remission was defined as a MADRS total score ≤ 12 . In all three studies, a greater proportion of patients treated with Esketamine (Spravato®) plus oral AD were in remission at the end of the 4-week double-blind induction phase than for oral AD plus placebo nasal spray (Table 2).

Table 2: Response and Remission Rates in 4 Week Clinical Trials

Study No.	Treatment Group [§]	Number of Patients (%)					Remission Rate [‡] Week 4
		Response Rate [†] 24 hours	Week 1	Week 2	Week 3	Week 4	
TRD3001	Esketamine (Spravato®) 56 mg + oral AD	20 (19.0%)	21 (18.4%)	29 (26.4%)	52 (48.6%)	60 (54.1%)	40 (36.0%)
	Esketamine (Spravato®) 84 mg + oral AD	17 (16.3%) [#]	16 (15.0%)	25 (25.3%)	33 (34.4%)	52 (53.1%)	38 (38.8%)
	Oral AD + placebo nasal spray	8 (7.9%)	5 (4.5%)	15 (14.2%)	25 (23.8%)	42 (38.9%)	33 (30.6%)
TRD3002	Esketamine (Spravato®) 56 mg or 84 mg + oral AD	18 (16.5%)	15 (13.8%)	29 (27.1%)	54 (52.4%)	70 (69.3%)	53 (52.5%)
	Oral AD + placebo nasal spray	11 (10.8%)	13 (12.4%)	23 (22.5%)	35 (33.7%)	52 (52.0%)	31 (31.0%)
TRD3005 (≥65 years)	Esketamine (Spravato®) 28 mg, 56 mg or 84 mg + oral AD	NA	4 (6.1%)	4 (5.9%)	9 (15.0%)	17 (27.0%)	11 (17.5%)
	Oral AD + placebo nasal spray	NA	3 (4.8%)	8 (12.9%)	8 (14.3%)	8 (13.3%)	4 (6.7%)

AD=antidepressant; NA=not available

[§] Nasally administered Esketamine (Spravato®) or placebo; oral AD=standard of care (newly initiated AD)[†] Response was defined as ≥50% reduction in the MADRS total score from baseline[‡] Remission was defined as MADRS total score ≤12[#] First dose was Esketamine (Spravato®) 56 mg + oral AD**Treatment-resistant depression – Long-term studies****Relapse-prevention study**

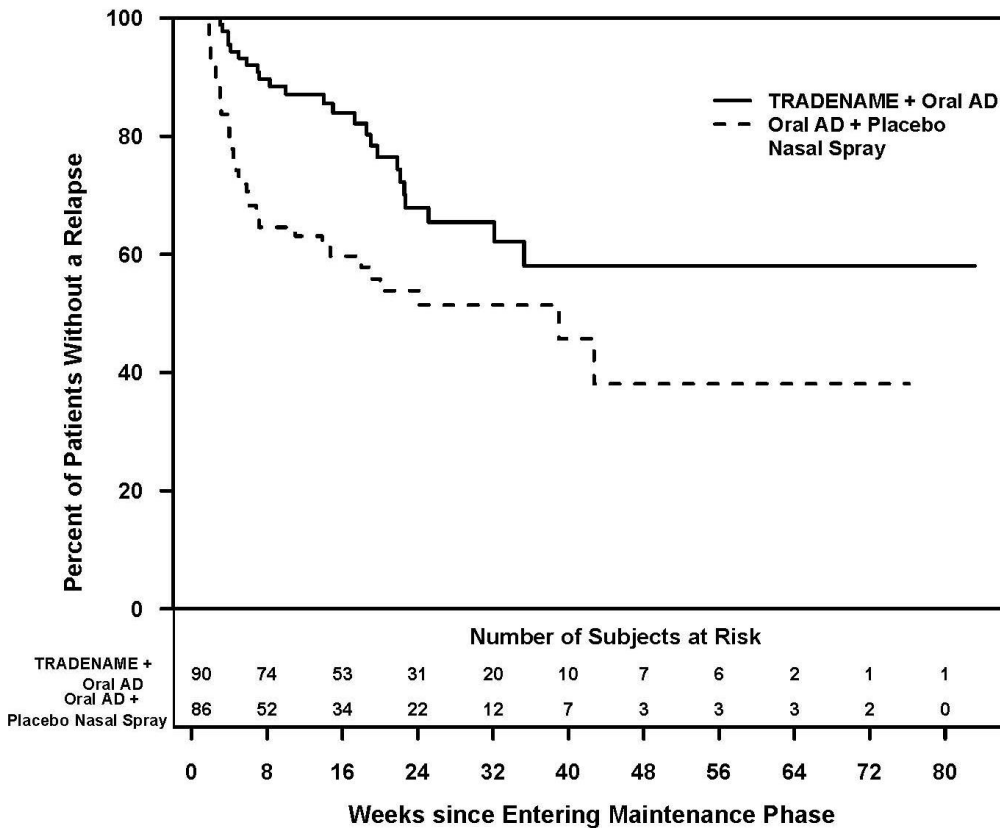
Study SUSTAIN-1 (TRD3003) was a long-term randomized, double-blind, parallel-group, active-controlled, multicenter, relapse prevention study. Overall a total of 705 patients were enrolled; 437 directly enrolled; 150 transferred from TRD3001, and 118 transferred from TRD3002. Patients directly enrolled were administered Esketamine (Spravato®) (56 mg or 84 mg twice weekly) plus oral AD in a 4-week open label induction phase. Patients who were responders (MADRS total score reduction ≥50% from baseline), continued receiving treatment with Esketamine (Spravato®) plus oral AD in a 12-week optimization phase. At the end of the open label induction phase, 52% of patients were in remission (MADRS total score ≤12) and 66% of patients were responders (≥50% improvement in MADRS total score). Four hundred fifty-five (455) esketamine-treated patients entered the optimization phase, patients in stable remission or stable response were randomized to continue with Esketamine (Spravato®) or stop Esketamine (Spravato®) and switch to placebo nasal spray. After an initial 16 weeks of treatment with Esketamine (Spravato®) plus oral AD, 176 (39%) patients were in stable remission and 121 (27%) patients were in stable response (but not in stable remission). Stable remission was defined as MADRS total score ≤12 in at least 3 of the last 4 weeks of the optimization phase and stable response was defined as ≥50% reduction in the MADRS total score from baseline for the last 2 weeks of the optimization phase, but not in stable remission.

The baseline demographic and disease characteristics of the patients randomized to the double-blind maintenance phase were similar between the Esketamine (Spravato®) plus oral AD and oral AD plus placebo groups, median patient age was 48 years (range 19 to 64 years), 66% were female; 90% Caucasian and 4% of African descent.

Stable Remission

Patients in stable remission who continued treatment with Esketamine (Spravato®) plus oral AD experienced a statistically significantly longer time to relapse of depressive symptoms than did patients on standard of care (oral AD) plus placebo nasal spray (Figure 3). Relapse was defined as a MADRS total score ≥ 22 for 2 consecutive weeks or hospitalization for worsening depression or any other clinically relevant event indicative of relapse. The median time to relapse for standard of care (oral AD) plus placebo nasal spray group was 273 days, whereas the median was not estimable for Esketamine (Spravato®) plus oral AD, as this group never reached 50% relapse rate.

Figure 3: Time to Relapse in Patients in Stable Remission in Study TRD3003 (Full Analysis Set)

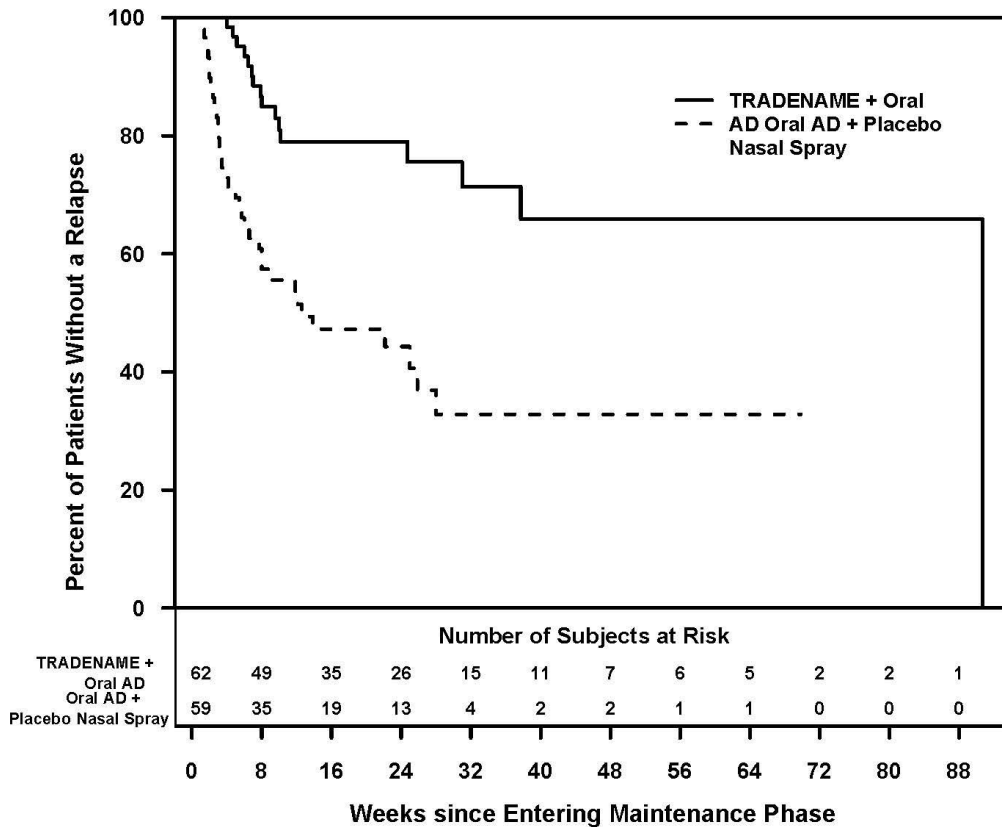


For patients in stable remission, the estimated hazard ratio (95% CI) of Esketamine (Spravato®) plus oral AD relative to standard of care (oral AD) plus placebo nasal spray based on weighted estimates was 0.49 (95% CI: 0.29, 0.84), indicating that, patients who were in stable remission and continued treatment with Esketamine (Spravato®) plus oral AD group were on average 51% less likely to relapse than patients who switched to standard of care (oral AD) plus placebo nasal spray.

Stable Response

The efficacy results were also consistent for patients in stable response who continued treatment with Esketamine (Spravato®) plus oral AD; patients experienced a statistically significantly longer time to relapse of depressive symptoms than did patients on standard of care (oral AD) plus placebo nasal spray (Figure 4). The median time to relapse for standard of care (oral AD) plus placebo nasal spray group (88 days) was shorter compared to Esketamine (Spravato®) plus oral AD group (635 days).

Figure 4: Time to Relapse in Patients in Stable Response in Study TRD3003 (Full Analysis Set)



For patients in stable response, the estimated hazard ratio (95% CI) of Esketamine (Spravato®) plus oral AD relative to standard of care (oral AD) plus placebo nasal spray based on Cox proportional hazards model was 0.30 (95% CI: 0.16, 0.55), indicating that, patients who were stable responders and continued treatment with Esketamine (Spravato®) plus oral AD group were on average 70% less likely to have a relapse than patients who switched to standard of care (oral AD) plus placebo nasal spray.

Enrollment in TRD3003 was staggered over approximately 2 years. The maintenance phase was of variable duration and continued until the individual patient had a relapse of depressive symptoms or discontinued for any other reason, or the study ended because the required number of relapse events occurred. Exposure numbers were influenced by the study stopping at a pre-determined number of relapses based on the interim analysis. After an initial 16 weeks of treatment with Esketamine (Spravato®) plus oral AD, the median duration of exposure to Esketamine (Spravato®) in the maintenance phase was 4.2 months (range: 1 day to 21.2 months) in Esketamine (Spravato®)-treated patients (stable remission and stable response). In this study, 31.6% of patients received Esketamine (Spravato®) for greater than 6 months and 7.9% of patients received Esketamine (Spravato®) for greater than 1 year in the maintenance phase.

Dosing Frequency

Starting from week 8, an algorithm (based on the MADRS) was used to determine the dosing frequency; patients in remission (i.e., MADRS total score was ≤ 12) were dosed every other week, however, if the MADRS total score increased to >12 , then the frequency was increased to weekly dosing for the next 4 weeks; with the objective of maintaining the patient on the lowest dosing frequency to maintain response/remission. The dosing frequency used the majority of the time during the maintenance phase is shown in Table 3. Of the patients randomized to Esketamine (Spravato®), 60% received 84 mg and 40% received 56 mg dose.

Table 3: Dosing Frequency Used the Majority of the Time; Maintenance Phase (Study TRD3003)

	Stable Remission			Stable Responders		
	Esketamine (Spravato®) Oral (N=90)	Oral AD + Placebo Spray (N=86)	AD Nasal (N=62)	+ Esketamine (Spravato®) Oral AD Spray (N=59)	+ Placebo Nasal	
Majority dosing frequency						
Weekly	21 (23.3%)	27 (31.4%)	34 (54.8%)	36 (61.0%)		
Every other week	62 (68.9%)	48 (55.8%)	21 (33.9%)	19 (32.2%)		
Weekly or every other week	7 (7.8%)	11 (12.8%)	7 (11.3%)	4 (6.8%)		

Open-label Long-term Safety and Efficacy Study

Study SUSTAIN-2 (TRD3004) was an open-label, long-term study of Esketamine (Spravato®) plus oral AD in patients with TRD.

The primary objective was to evaluate the long-term (up to 52 weeks) safety and efficacy of Esketamine (Spravato®). Esketamine (Spravato®) was not associated with effects on cognitive function or treatment-emergent symptoms of interstitial cystitis. In the elderly subgroup (≥ 65 years of age) slowing of reaction time starting at Week 20 and through the end of the study was observed, however, performance on other cognitive tests remained stable.

In addition, there was no evidence of withdrawal and/or rebound symptoms following cessation of Esketamine (Spravato®) treatment. No cases of respiratory depression were reported and there was no evidence of treatment related changes in lab parameters.

Mean body weight remained stable during treatment with Esketamine (Spravato®) plus oral AD both in the induction phase and maintenance phase (mean change from baseline \pm standard deviation of -0.29 ± 2.15 kg at Day 28 and 0.44 ± 5.83 kg at Week 48).

TRD3004 also evaluated long-term efficacy, including effects on depressive symptoms. At the end of the 4-week induction phase, the response rate ($\geq 50\%$ improvement from Baseline in the MADRS total score) was 78.4% (593/756) and remission rate (MADRS total score ≤ 12) was 47.2% (357/756); of the responders proceeding to the maintenance phase, 76.5% (461/603) were in response and 58.2% (351/603) were in remission at endpoint.

Dose-response study in treatment-resistant depression

A Phase 2 adjunctive, doubly-randomized, double-blind, placebo-controlled, dose-ranging study, enrolled 108 adult patients with TRD. Adjunctive to continued oral AD therapy, patients were treated with

esketamine 14 mg, 28 mg, 56 mg or 84 mg or placebo administered nasally twice a week for 2 weeks. Treatment with the 28-mg, 56-mg and 84-mg doses of Esketamine (Spravato®) significantly improved depressive symptoms in patients with TRD as demonstrated by the change in MADRS total score after 1 week. While Esketamine (Spravato®) doses of 28 mg, 56 mg and 84 mg were efficacious in TRD treatment, the duration of the efficacy of the 28-mg dose was shorter.

Response rates at Day 8 of Period 1 for the double-blind phase are shown below (Table 4).

Table 4: Response Rates in TRD2003 (Double Blind Phase – Period 1)

	Treatment Group [§]	Number of Patients (%)		
		Response Rate [†]		
		2 hours	24 hours	Day 8
Panel A	Esketamine (Spravato®) 28mg	6 (54.5%)	4 (36.4%)	1 (9.1%)
	Esketamine (Spravato®) 56 mg	4 (36.4%)	3 (27.3%)	2 (18.2%)
	Esketamine (Spravato®) 84 mg	7 (58.3%)	5 (41.7%)	5 (41.7%)
	Placebo Nasal Spray	6 (18.2%)	1 (3.0%)	2 (6.1%)
Panel B	Esketamine (Spravato®) 14mg	4 (36.4%)	4 (36.4%)	2 (18.2%)
	Esketamine (Spravato®) 56 mg	4 (44.4%)	4 (44.4%)	2 (22.2%)
	Placebo Nasal Spray	7 (33.3%)	6 (28.6%)	5 (23.8%)

[§] Nasally administered Esketamine (Spravato®) or placebo

[†] Response was defined as ≥50% reduction in the MADRS total score from baseline

Major Depressive Disorder with acute suicidal ideation or behavior

Esketamine (Spravato®) was evaluated in two identical Phase 3 short term (4 week) randomized, double blind, multicenter, placebo controlled studies, Aspire I (SUI3001; NCT03039192) and Aspire II (SUI3002; NCT03097133) in adult patients with moderate to severe MDD (MADRS total score >28) who had active suicidal ideation with intent. In these studies, patients received treatment with Esketamine (Spravato®) 84 mg or placebo nasal spray twice weekly for 4 weeks. All patients received comprehensive standard of care (SOC) treatment, including an initial inpatient hospitalization and a newly initiated or optimized oral antidepressant (AD) therapy (AD monotherapy or AD plus augmentation) as determined by the investigator. After the first dose, a one-time dose reduction to Esketamine (Spravato®) 56 mg was allowed for patients unable to tolerate the 84 mg dose.

The baseline demographic and disease characteristics of patients in SUI3001 and SUI3002 were similar between the Esketamine (Spravato®) plus SOC or placebo nasal spray plus SOC groups. The median patient age was 40 years (range 18 to 64 years), 61% were female; 73% Caucasian and 6% Black; and 63% of patients had at least one prior suicide attempt. Prior to entering the study, 92% of the patients were receiving antidepressant therapy. During the study, as part of standard of care treatment, 40% of patients received AD monotherapy, 54% of patients received AD plus augmentation regimen, and 6% received both AD monotherapy/AD plus augmentation regimen.

The primary efficacy measure was the reduction of symptoms of MDD as measured by the change from baseline MADRS total score at 24 hours after first dose (Day 2).

In SUI3001 and SUI3002, Esketamine (Spravato®) plus SOC demonstrated statistical superiority on the primary efficacy measure compared to placebo nasal spray plus SOC (see Table 5).

Table 5: Primary Efficacy Results for Change from Baseline in MADRS Total Score at 24 Hours After First Dose (Studies SUI3001 and SUI3002 (ANCOVA*))

Study No.	Treatment Group [§]	Number of Patients	Mean Baseline Score (SD)	LS Mean Change from Baseline to 24 hr Post First Dose (SE)	LS Mean Difference (95% CI) [†] p-value
SUI3001	Esketamine (Spravato®) 84 mg + SOC	111	41.3 (5.87)	-15.9 (1.04)	-3.8 (-6.56; -1.09) [‡] P=0.006
	Placebo nasal spray + SOC	112	41.0 (6.29)	-12.0 (1.02)	-
SUI3002	Esketamine (Spravato®) 84 mg + SOC	113	39.4 (5.21)	-16.0 (1.02)	-3.9 (-6.60; -1.11) ‡ P=0.006
	Placebo nasal spray + SOC	113	39.9 (5.76)	-12.2 (1.05)	-
Pooled Studies (SUI3001 and SUI3002)	Esketamine (Spravato®) 84 mg + SOC	224	40.3 (5.61)	-16.0 (0.72)	-3.8 (-5.75; -1.89) ‡
	Placebo nasal spray + SOC	225	40.4 (6.04)	-12.1 (0.72)	-

SD=standard deviation; SE=standard error; LS Mean=least-squares mean; CI=confidence interval; SOC=standard of care.

* ANCOVA LOCF: For SUI3001, 1 subject (in the placebo + SOC group) did not have the Day 2 (24 hours post first dose) MADRS total score, and the MADRS total score was carried forward from 4 hours after the first dose. For SUI3002, of the 6 subjects who did not have the Day 2 (24 hours post first dose) MADRS total score, 5 of them were able to carry the MADRS total score from 4 hours after the first dose.

§ Nasally administered esketamine or placebo.

† Difference (Esketamine (Spravato®) + SOC minus placebo nasal spray + SOC) in least-squares mean change from baseline.

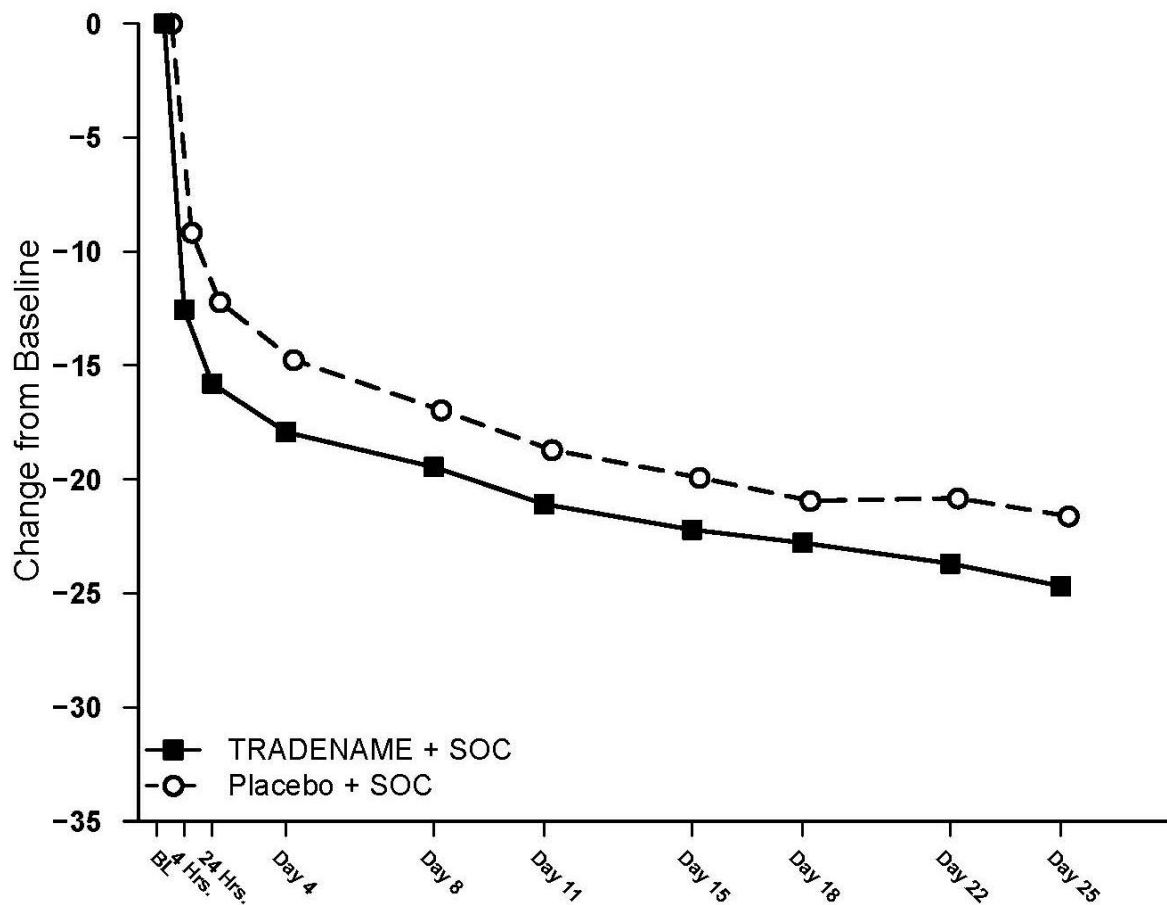
‡ Treatment groups that were statistically significantly superior to placebo nasal spray + SOC.

The treatment differences (95% CI) in change from baseline in MADRS total score at Day 2 (24 hours post first dose) between Esketamine (Spravato®) + SOC and placebo + SOC were 4.81 (7.26; 2.36) for the subpopulation that reported a prior suicide attempt (N=282) and 2.32 (5.54; 0.91) for the subpopulation that did not report a prior suicide attempt (N=166).

Time Course of Treatment Response

In both SUI3001 and SUI3002, Esketamine (Spravato®)'s treatment difference compared to placebo was observed starting at 4 hours. Between 4 hours and Day 25, both the Esketamine (Spravato®) and placebo groups continued to improve; the difference between the groups generally remained but did not appear to increase over time through Day 25. Figure 5 depicts time course of the primary efficacy measure of change in MADRS total score using pooled SUI3001 and SUI3002.

Figure 5: Least Squares Mean Change from Baseline in MADRS Total Score Over Time in SUI3001 and SUI3002* (Pooled, Full Analysis Set) – MMRM



*Note: In these studies, after the first dose, a one-time dose reduction to (Esketamine (Spravato®) 56 mg was allowed for patients unable to tolerate the 84 mg dose. Approximately 16% of patients had reduction in (Esketamine (Spravato®) dosage from 84 mg to 56 mg twice weekly.

Remission rates

In the Phase 3 studies, the percentage of patients who achieved remission (MADRS total score ≤ 12 at any given time during the study) was greater in the Esketamine (Spravato®) + SOC group than in the placebo + SOC group at all timepoints during the double-blind treatment phase (Table 6).

Table 6: Patients Who Achieved Remission of MDD; Double-blind Treatment Phase; Full Efficacy Analysis Set

	SUI3001		SUI3002		Pooled Studies (SUI3001 and SUI3002)	
	Placebo + SOC	Esketamine (Spravato®) + SOC	Placebo + SOC	Esketamine (Spravato®) + SOC	Placebo + SOC	Esketamine (Spravato®) + SOC
	112	112	113	114	225	226
Day 1, 4 hours post first dose Patients with Remission of MDD	9 (8.0%)	12 (10.7%)	4 (3.5%)	12 (10.5%)	13 (5.8%)	24 (10.6%)
Day 2, 24 hours post first dose Patients with Remission of MDD	10 (8.9%)	21 (18.8%)	12 (10.6%)	25 (21.9%)	22 (9.8%)	46 (20.4%)
Day 25 Patients with Remission of MDD	38 (33.9%)	46 (41.1%)	31 (27.4%)	49 (43.0%)	69 (30.7%)	95 (42.0%)

SOC = standard of care

Note: Remission is based on a MADRS total score of ≤ 12 . Subjects who did not meet such criterion or discontinued prior to the time point for any reason are not considered to be in remission.

Effects on Suicidality

Overall patients in both treatment groups experienced improvement in the severity of their suicidality as measured by the Clinical Global Impression – Severity of Suicidality - Revised (CGI-SS-r) scale at the 24-hour endpoint, though there was no statistically significant difference between treatment groups. The long-term efficacy of Esketamine (Spravato®) to prevent suicide has not been established.

Pharmacokinetic Properties

Absorption

The mean absolute bioavailability of 84 mg esketamine administered as a nasal spray is approximately 48%.

Esketamine is rapidly absorbed by the nasal mucosa following nasal administration and can be measured in plasma within 7 minutes following a 28-mg dose. The time to reach maximum plasma concentration (t_{max}) is typically 20 to 40 minutes after the last nasal spray of a treatment session (see **Dosage and Method of Administration**).

Dose-dependent, linear increases in the plasma C_{max} and AUC_{∞} of esketamine nasal spray were produced by doses of 28 mg, 56 mg and 84 mg.

The pharmacokinetic profile of esketamine is similar after a single dose and repeat dose administration with no accumulation in plasma when esketamine is administered twice a week.

Distribution

The mean steady-state volume of distribution of esketamine administered by the intravenous route is 709 L.

The proportion of the total concentration of esketamine that is bound to proteins in human plasma is on average 43 to 45%. The degree to which esketamine is bound to plasma proteins is not dependent on hepatic or renal function.

Esketamine is not a substrate of transporters P-glycoprotein (P-gp; multidrug resistance protein 1), breast cancer resistance protein (BCRP), or organic anion transporter (OATP) 1B1, or OATP1B3. Esketamine does not inhibit these transporters or multi-drug and toxin extrusion 1 (MATE1) and MATE2-K, or organic cation transporter 2 (OCT2), OAT1, or OAT3.

Metabolism

Esketamine is extensively metabolized in the liver. The primary metabolic pathway of esketamine in human liver microsomes is N-demethylation to form noresketamine. The main CYP enzymes responsible for esketamine N-demethylation are CYP2B6 and CYP3A4. Other CYP enzymes, including CYP2C19 and CYP2C9, contribute to a much smaller extent. Noresketamine is subsequently metabolized via CYP-dependent pathways to other metabolites, some of which undergo glucuronidation.

Excretion

The mean clearance of esketamine administered by the intravenous route was approximately 89 L/hour. After C_{max} was reached following nasal administration, the decline in esketamine concentrations in plasma was rapid for the first few hours and then more gradual. The mean terminal half-life following administration as a nasal spray generally ranged from 7 to 12 hours.

Following intravenous administration of radiolabeled esketamine, approximately 78% and 2% of administered radioactivity was recovered in urine and feces, respectively. Following oral administration of radiolabeled esketamine, approximately 86% and 2% of administered radioactivity was recovered in urine and feces, respectively. The recovered radioactivity consisted primarily of esketamine metabolites. For the intravenous and oral routes of administration, <1% of the dose was excreted in the urine as unchanged drug.

Special populations

Elderly (65 years of age and older)

The pharmacokinetics of esketamine administered as a nasal spray was compared between elderly but otherwise healthy subjects and younger healthy adults. The mean esketamine C_{max} and AUC_{∞} values produced by a 28-mg dose were 21% and 18% higher, respectively, in elderly subjects (age range 65 to 81 years) compared with younger adult subjects (age range 22 to 50 years). The mean esketamine C_{max} and AUC_{∞} values produced by an 84-mg dose were 67% and 38% higher, respectively, in elderly subjects (age range 75 to 85 years) compared with younger adult subjects (age range 24 to 54 years). The terminal half-life of esketamine was similar in the elderly and younger adult subjects.

Renal impairment

Relative to the subjects with normal renal function (creatinine clearance [CL_{CR}], 88 to 140 mL/min), the C_{max} of esketamine was on average 20 to 26% higher in subjects with mild (CL_{CR} , 58 to 77 mL/min), moderate (CL_{CR} , 30 to 47 mL/min), or severe (CL_{CR} , 5 to 28 mL/min, not on dialysis) renal impairment following administration of a 28-mg dose of esketamine nasal spray. The AUC_{∞} was 13 to 36% higher in the subjects with mild to severe renal impairment.

There is no clinical experience with esketamine administered as a nasal spray in patients on dialysis.

Hepatic impairment

The C_{max} and AUC_{∞} of esketamine produced by a 28-mg doses were similar between subjects with Child-Pugh class A (mild) hepatic impairment and healthy subjects. The C_{max} and AUC_{∞} of esketamine were 8% higher and 103% higher, respectively, in subjects with Child-Pugh class B (moderate) hepatic impairment, relative to healthy subjects.

There is no clinical experience with esketamine administered as a nasal spray in patients with Child-Pugh class C (severe) hepatic impairment.

Race

The pharmacokinetics of esketamine nasal spray was compared between healthy Asian subjects and Caucasian subjects. Mean plasma esketamine C_{max} and AUC_{∞} values produced by a single, 56-mg dose of esketamine were approximately 14% and 33% higher, respectively, in Chinese subjects compared to Caucasians. Both parameters were approximately 40% higher in Japanese subjects, relative to Caucasian subjects. On average, esketamine C_{max} was 10% lower and AUC_{∞} was 17% greater in Korean subjects, relative to Caucasian subjects. The mean terminal half-life of esketamine in the plasma of Asian subjects ranged from 7.1 to 8.9 hours and was 6.8 hours in Caucasian subjects.

Gender

A population pharmacokinetic analysis was conducted that included healthy subjects (138 males and 118 females) and patients with major depressive disorder (203 males and 361 females). The results indicated that the pharmacokinetics of esketamine administered as a nasal spray is not influenced by gender.

Body Weight

A population pharmacokinetic analysis was conducted that included 256 healthy subjects and 564 patients with major depressive disorder. The total body weight of the subjects ranged from 39 to 170 kg. The results indicated that the pharmacokinetics of esketamine administered as a nasal spray is not influenced by body weight.

Allergic rhinitis

The pharmacokinetics of a single, 56-mg dose of esketamine administered as a nasal spray was similar in subjects with allergic rhinitis who were exposed to grass pollen compared to healthy subjects.

Non-clinical Information

General Toxicity

Once-daily nasal administration of esketamine in rats up to 9 mg/day for 6 months, and dogs up to 72 mg/day for 9 months, resulted in non-adverse central nervous system-related clinical signs reflecting the anesthetic properties of the test article. No notable lesions were found in the nasal cavity or any peripheral organ. After 3 months of daily treatment at 9 mg/day in rats, the systemic exposure of esketamine (C_{max} and AUC) resembled that in humans at the maximum recommended human dose (MRHD) of 84 mg, while the C_{max} - and AUC-based exposure ratios for esketamine in dogs after 3 months of daily treatment at 72 mg/day were approximately 4- and 1-fold, respectively.

Neurotoxicity

In single-dose and 14-day repeated-dose neurotoxicity studies with nasally-administered esketamine in rats, no histopathological brain lesions were noted. In single dose neurotoxicity studies, where rats were nasally-administered with esketamine at a dose up to 72 mg, the C_{max} - and AUC-based safety margins for

esketamine were approximately 59- and 86-fold, respectively, compared to the human exposure at the MRHD of 84 mg. In a 14-day neurotoxicity study where rats received nasally-administered esketamine once daily up to a dose of 54 mg/day, the C_{max} - and AUC-based safety margins for esketamine were approximately 17- and 11-fold. Moreover, no evidence of neurotoxicity was found in the 6-month rat and the 9-month dog repeated-dose toxicology studies with once daily nasal administration of esketamine as judged by brain histopathology and functional assessments. Similarly, no neurotoxicity was noted in the shorter-term animal toxicology studies with nasally-administered esketamine. Overall, the risk of neurotoxicity associated with nasal administration of esketamine to patients is expected to be low.

Carcinogenicity and Mutagenicity

Once-daily nasal administration of esketamine did not increase the incidence of tumors in a 2-year rat carcinogenicity study at doses up to 9 mg/day. At this dose, the exposure to esketamine resembled the human exposure at the MRHD of 84 mg. Esketamine was not carcinogenic either upon once-daily subcutaneous administration in a 6-month study in transgenic (Tg.rasH2) mice at doses up to 70/40 mg/kg/day. At that dose, the C_{max} - and AUC-based exposure ratios for esketamine were approximately 20- and 4-fold, respectively, compared to the MRHD of 84 mg.

Esketamine was not mutagenic with or without metabolic activation in the Ames test. Genotoxic effects with esketamine were seen in a screening *in vitro* micronucleus test in the presence of metabolic activation. However, intravenously-administered esketamine was devoid of genotoxic properties in an *in vivo* bone marrow micronucleus test in rats and an *in vivo* Comet assay in rat liver cells. In simulated gastric fluid there is no evidence that N-nitroso-esketamine is formed out of the fraction of the nasally-administered dose of esketamine that is orally absorbed.

Reproductive Toxicity

In an embryo-fetal developmental toxicity study with nasally-administered ketamine in rats, the offspring was not adversely affected in the presence of maternal toxicity at doses up to 150 mg/kg/day. In rats, the C_{max} - and AUC-based safety margin estimated for esketamine at the 150 mg/kg/day dose of ketamine was 61- and 12-fold compared to the maximum recommended human dose (MRHD) of esketamine of 84 mg. In pregnant rabbits, racemic ketamine was administered intranasally from gestational day 6 to 18 at doses of 10, 30, and 100 mg/kg/day. The high dose was lowered from 100 to 50 mg/kg after 5 days of dosing due to excessive mortality in the pregnant rabbits. Skeletal malformations were observed at doses \geq 30 mg/kg/day, which were maternally toxic. In rabbits, the estimated exposure to esketamine at the 10 mg/kg/day no-effect dose of ketamine was below the maximum exposure to esketamine at 84 mg in humans.

Animal studies with ketamine showed evidence of developmental neurotoxicity. The potential for esketamine to have neurotoxic effects on developing fetuses cannot be excluded. (see **Pregnancy and Breast-feeding**).

In a pre- and postnatal developmental toxicity study with nasally-administered esketamine up to 9 mg/day in rats, no adverse effects occurred in the dams nor their offspring.

Fertility

In a fertility and early embryonic developmental toxicity study, esketamine nasally-administered to rats at 0.9, 3, or 9 mg/day caused maternal and paternal toxicity at 3 and 9 mg/day. Fertility and reproductive capacities were not adversely affected at any dose.

THERAPEUTIC INDICATIONS

Esketamine (Spravato®) is indicated, in conjunction with oral antidepressant therapy, for treatment-resistant depression (Major Depressive Disorder in adults who have not responded adequately to at least two different antidepressants of adequate dose and duration to treat the current depressive episode).

Esketamine (Spravato®) is indicated, in conjunction with oral antidepressant therapy, for the rapid reduction of depressive symptoms in adult patients with Major Depressive Disorder who have acute suicidal ideation or behavior.

The effectiveness of Esketamine (Spravato®) in preventing suicide or in reducing suicidal ideation or behavior has not been demonstrated. Use of Esketamine (Spravato®) does not preclude the need for hospitalization if clinically warranted, even if patients experience improvement after an initial dose of Esketamine (Spravato®).

DOSAGE AND METHOD OF ADMINISTRATION

Esketamine (Spravato®) should be administered in conjunction with oral antidepressant (AD) therapy.

A treatment session consists of nasal administration of Esketamine (Spravato®) and post-administration observation under the supervision of a healthcare professional.

Esketamine (Spravato®) is for nasal use only. The nasal spray device is a single-use device that delivers a total of 28 mg of esketamine in two sprays (one spray per nostril). To prevent loss of medication, the device should not be primed before use. It is intended for administration by the patient under the supervision of a healthcare professional, using 1 device (for a 28 mg dose), 2 devices (for a 56 mg dose) or 3 devices (for an 84 mg dose), with a 5-minute rest between use of each device.

Blood pressure assessment before and after treatment

Assess blood pressure prior to dosing with Esketamine (Spravato®) (see ***Special Warnings and Special Precautions for Use***).

If baseline blood pressure is elevated (e.g., >140 mmHg systolic, >90 mmHg diastolic), consider the risks of short term increases in blood pressure and benefit of Esketamine (Spravato®) treatment (see ***Special Warnings and Special Precautions for Use***). Do not administer Esketamine (Spravato®) if an increase in blood pressure or intracranial pressure poses a serious risk (see ***Contraindications***).

After dosing with Esketamine (Spravato®), reassess blood pressure at approximately 40 minutes and subsequently as clinically warranted.

If blood pressure is decreasing and the patient appears clinically stable, the patient may leave at the end of the post-dose monitoring period; if not, continue to monitor (see ***Special Warnings and Special Precautions for Use***).

Since some patients may experience nausea and vomiting after administration of Esketamine (Spravato®), patients should be advised not to eat for at least 2 hours before administration and not to drink liquids at least 30 minutes prior to administration (see ***Undesirable Effects - Nausea and vomiting***).

Patients who require a nasal corticosteroid or nasal decongestant on a dosing day should be advised not to administer these medications within 1 hour before administration of Esketamine (Spravato®).

For instructions to prepare the patient and for use of the nasal spray device, see **Instructions for Use and Handling**.

Dosage – Adults

Treatment-resistant depression The dosage recommendations for Esketamine (Spravato®) for TRD are shown in Table 7. Dose adjustments should be made based on efficacy and tolerability to the previous dose.

Table 7: Recommended Dosing for Esketamine (Spravato®) for TRD

Induction Phase	Maintenance Phase
Weeks 1-4 (two treatment sessions/week):	Weeks 5-8:
Starting Day 1 dose*: 56 mg	56 mg or 84 mg once weekly
Subsequent doses: 56 mg or 84 mg	From Week 9:
	56 mg or 84 mg every 2 weeks or once weekly**
Evidence of therapeutic benefit should be evaluated at the end of induction phase to determine need for continued treatment.	Periodically reexamine the need for continued treatment.

* For patients ≥65 years Day 1 starting dose is 28 mg

** Dosing frequency should be individualized to the lowest frequency to maintain remission/response.

After depressive symptoms improve, treatment is recommended for at least 6 months.

Major Depressive Disorder with acute suicidal ideation or behavior

The recommended dosage for Esketamine (Spravato®) for patients with MDD who have acute suicidal ideation or behavior is 84 mg twice per week for 4 weeks. Dosage reduction to 56 mg should be made based on tolerability. After 4 weeks of treatment with Esketamine (Spravato®), the oral antidepressant (AD) therapy should be continued, per clinical judgement.

Patients who also have TRD should be evaluated to determine need for continued treatment with Esketamine (Spravato®) beyond 4 weeks.

Post-administration observation

During and after Esketamine (Spravato®) administration at each treatment session, a healthcare professional should observe the patient until the patient is stable based on clinical judgment. Before Esketamine (Spravato®) administration, instruct patients not to engage in potentially hazardous activities, such as driving a motor vehicle or operating machinery until the next day after a restful sleep. (See **Special Warnings and Special Precautions for Use – Effect on blood pressure, Potential for cognitive and motor impairment and effect on driving**).

Missed treatment session(s)

If a patient misses treatment session(s) during the first 4 weeks of treatment, patients should continue their current dosing schedule.

For patients with TRD who miss treatment session(s) during maintenance phase and have worsening of depression symptoms, per clinical judgement, consider returning to the previous dosing schedule (see Table 7).

Special populations

Pediatrics (17 years of age and younger)

The safety and efficacy of Esketamine (Spravato®) have not been established in patients aged 17 years and younger.

Elderly (65 years of age and older)

In elderly patients the initial Esketamine (Spravato®) dose is 28 mg (Day 1, Starting Dose, see Table 7). Subsequent doses should be increased in increments of 28 mg up to 56 mg or 84 mg, based on efficacy and tolerability.

Hepatic impairment

No dosage adjustment is necessary in patients with mild (Child-Pugh class A) or moderate (Child-Pugh class B) hepatic impairment.

Esketamine (Spravato®) has not been studied in patients with severe hepatic impairment (Child-Pugh class C). Use in this population is not recommended. (See ***Pharmacokinetic Properties – Special populations, Hepatic impairment***).

Japanese and Chinese patients with treatment-resistant depression

Efficacy of Esketamine (Spravato®) in Japanese and Chinese patients has not been established.

CONTRAINDICATIONS

Esketamine (Spravato®) is contraindicated in patients for whom an increase in blood pressure or intracranial pressure poses a serious risk (see ***Special Warnings and Special Precautions for Use – Effect on blood pressure***):

- Patients with known aneurysmal vascular disease (including intracranial, thoracic, or abdominal aorta, or peripheral arterial vessels)
- Patients with known history of intracerebral hemorrhage

Esketamine (Spravato®) is contraindicated in patients with a known hypersensitivity to esketamine, ketamine, or to any of the excipients.

SPECIAL WARNINGS AND SPECIAL PRECAUTIONS FOR USE

Suicide/suicidal thoughts or clinical worsening

The effectiveness of Esketamine (Spravato®) in preventing suicide or in reducing suicidal ideation or behavior has not been demonstrated.

Use of Esketamine (Spravato®) for the rapid reduction of depressive symptoms in adult patients with Major Depressive Disorder who have acute suicidal ideation or behavior does not preclude the need for hospitalization, if clinically warranted, even if patients experience improvement after an initial dose of Esketamine (Spravato®).

Closely monitor all antidepressant treated patients including patients treated with Esketamine (Spravato®) for clinical worsening or emergence of suicidal thoughts and behaviors, especially during the initial few months of drug therapy and at times of dosage changes. Patients (and caregivers of patients) should be alerted to the need to monitor for any clinical worsening, suicidal behavior or thoughts and unusual changes in behavior and to seek medical advice immediately if these symptoms present.

Depression is associated with an increased risk of suicidal thoughts, self harm and suicide (suicide related events). This risk persists until significant remission occurs, therefore, patients should be closely monitored. It is general clinical experience that the risk of suicide may increase in the early stages of recovery.

Patients with a history of suicide related events or those exhibiting a significant degree of suicidal ideation prior to commencement of treatment are known to be at greater risk of suicidal thoughts or suicide attempts and should receive careful monitoring during treatment.

Effect on blood pressure

Esketamine (Spravato[®]) can cause transient increases in systolic and/or diastolic blood pressure which peak at approximately 40 minutes after drug administration and last approximately 1-2 hours (see **Undesirable Effects**). Patients with cardiovascular and cerebrovascular conditions should be carefully assessed before prescribing Esketamine (Spravato[®]) and treatment initiated only if the benefit outweighs the risk (see **Contraindications**). Examples of conditions which should be carefully considered include:

- Unstable or poorly controlled hypertension.
- History (within 6 weeks) of cardiovascular event, including myocardial infarction (MI). Patients with a history of an MI should be clinically stable and cardiac symptom free prior to dosage administration.
- History (within 6 months) of ischemic stroke or transient ischemic attack.
- Hemodynamically significant valvular heart disease such as mitral regurgitation, aortic stenosis, or aortic regurgitation.
- New York Heart Association (NYHA) Class III-IV heart failure of any etiology.

Administration of Esketamine (Spravato[®]) can temporarily raise blood pressure lasting approximately 1-2 hours. Blood pressure should be assessed prior to dosing with Esketamine (Spravato[®]). In patients whose blood pressures prior to dose administration and are judged to be elevated (as a general guide: >140/90 mmHg for patients <65 years of age and >150/90 mmHg for patients ≥65 years of age), it is appropriate to consider lifestyle and/or pharmacologic therapies to reduce blood pressure before starting treatment with Esketamine (Spravato[®]). The decision whether or not to delay Esketamine (Spravato[®]) therapy should take into account the balance of benefit and risk in individual patients.

Blood pressure should be monitored after dose administration until blood pressure returns to acceptable levels. If blood pressure remains too high, assistance should promptly be sought from practitioners experienced in blood pressure management. Patients who experience symptoms of a hypertensive crisis should be referred immediately for emergency care.

Closely monitor blood pressure with concomitant use of Esketamine (Spravato[®]) with psychostimulants or monoamine oxidase inhibitors (MAOIs) (see **Interactions**).

Potential for Cognitive and Motor Impairment

Esketamine (Spravato[®]) has been reported to cause somnolence, sedation, dissociative symptoms, perception disturbances, dizziness, vertigo and anxiety during the clinical trials (see **Undesirable Effects**). These effects may impair attention, judgment, thinking, reaction speed and motor skills. Tolerance to above effects may develop after a few treatment sessions. At each treatment session, patients should be monitored by a healthcare professional to assess when the patient is considered clinically stable (see **Dosage and Method of Administration/Post-administration observation**).

Short-Term Cognitive Impairment

In a study in healthy volunteers, a single dose of Esketamine (Spravato®) caused cognitive performance decline 40 minutes post-dose. Compared to placebo-treated subjects, Esketamine (Spravato®)-treated subjects required a greater effort to complete cognitive tests at 40 minutes post-dose. Cognitive performance and mental effort were comparable between Esketamine (Spravato®) and placebo at 2 hours post-dose. Sleepiness was comparable after 4 hours post-dose.

Long-Term Cognitive Impairment

Long-term cognitive and memory impairment have been reported with long-term ketamine use or drug abuse. These effects did not increase over time and were reversible after discontinuing ketamine. In the clinical trials, the effect of esketamine nasal spray on cognitive functioning was evaluated over time and performance remained stable.

Effect on Driving

Two studies were conducted to assess the effects of Esketamine (Spravato®) on the ability to drive (see ***Pharmacodynamic Effects – Effect on driving***). Before Esketamine (Spravato®) administration, instruct patients not to engage in potentially hazardous activities requiring complete mental alertness and motor coordination, such as driving a motor vehicle or operating machinery, until the next day following a restful sleep (see ***Special Warnings and Special Precautions for Use - Potential for cognitive and motor Impairment***).

Bladder Effects

Cases of interstitial cystitis have been reported in subjects using ketamine for recreational use or for treatment of chronic pain at high doses with long-term use. In clinical studies with esketamine nasal spray, subjects were assessed for symptoms of cystitis, bladder pain and interstitial cystitis. No cases of esketamine-related interstitial cystitis were observed in any of the studies, which involved treatment for up to a year (see ***Clinical Studies***).

Drug abuse and dependence

Abuse

Individuals with a history of drug abuse or dependence may be at greater risk for abuse and misuse of Esketamine (Spravato®). Careful consideration is advised prior to treatment of individuals with a history of substance use disorder, including alcohol. Monitoring for signs of abuse or dependence is recommended.

The potential for abuse, misuse and diversion of Esketamine (Spravato®) is minimized due to the product's design and the administration taking place under the supervision of a healthcare professional.

Ketamine, the racemic mixture of arketamine and esketamine, has been reported as a drug of abuse. In a study of abuse potential conducted in recreational polydrug users (n=41), single doses of esketamine nasal spray (84 mg and 112 mg) and the positive control drug intravenous ketamine (0.5 mg/kg infused over 40 minutes) produced significantly greater scores than placebo on subjective ratings of “drug liking” and on other measures of subjective drug effects.

Dependence

Dependence and tolerance have been reported with prolonged use of ketamine. Individuals who were dependent on ketamine reported withdrawal symptoms of cravings, anxiety, shaking, sweating and palpitations. Monitoring for signs of dependence is recommended.

Other Populations at Risk

Esketamine (Spravato®) should be used with caution in patients with the following conditions. These patients should be carefully assessed before prescribing Esketamine (Spravato®) and treatment initiated only if the benefit outweighs the risk:

- Presence or history of psychosis.
- Presence or history of mania or bipolar disorder.
- Hyperthyroidism that has not been sufficiently treated.
- Significant pulmonary insufficiency.
- Patients with known uncontrolled brady- or tachyarrhythmias that lead to hemodynamic instability.
- History of brain injury, hypertensive encephalopathy, intrathecal therapy with ventricular shunts, or any other condition associated with increased intracranial pressure.

INTERACTIONS

Pharmacodynamic interactions

Concomitant use with CNS depressants (e.g., benzodiazepines, opioids, alcohol) may increase sedation. Closely monitor for sedation with concomitant use of Esketamine (Spravato®) with CNS depressants.

Concomitant use with psychostimulants (e.g., amphetamines, methylphenidate, modafinil, armodafinil) may increase blood pressure. Closely monitor blood pressure with concomitant use of Esketamine (Spravato®) with psychostimulants.

Concomitant use with monoamine oxidase inhibitors (MAOIs) (e.g., tranylcypromine, selegiline, phenelzine) may increase blood pressure. Closely monitor blood pressure with concomitant use of Esketamine (Spravato®) with MAOIs.

Pharmacokinetic interactions

Esketamine is extensively metabolized in the liver. The primary metabolic pathway of esketamine in human liver microsomes is N-demethylation to form noresketamine. The main cytochrome P450 (CYP) enzymes responsible for esketamine N-demethylation are CYP2B6 and CYP3A4 (see **Pharmacokinetic Properties**).

Effect of other drugs on esketamine

Hepatic enzyme inhibitors

Pretreatment of healthy subjects with oral ticlopidine, an inhibitor of hepatic CYP2B6 activity, (250 mg twice daily for 9 days prior to and on the day of esketamine administration) had no effect on the maximum plasma concentration (C_{max}) of esketamine administered as a nasal spray. The area under the plasma concentration-time curve (AUC_{∞}) of esketamine was increased by approximately 29%. The terminal half-life of esketamine was not affected by ticlopidine pretreatment.

Pretreatment with oral clarithromycin, an inhibitor of hepatic CYP3A4 activity, (500 mg twice daily for 3 days prior to and on the day of esketamine administration) increased the mean C_{max} and AUC_{∞} of nasally administered esketamine by approximately 11% and 4%, respectively. The terminal half-life of esketamine was not affected by clarithromycin pretreatment.

Hepatic enzyme inducers

Pretreatment with oral rifampicin, a potent inducer of the activity of multiple hepatic CYP enzymes such as CYP3A4 and CYP2B6, (600 mg daily for 5 days prior to esketamine administration) decreased the mean

C_{max} and AUC_{∞} values of esketamine administered as a nasal spray by approximately 17% and 28%, respectively.

Other Nasal Spray Products

Concomitant use of Esketamine (Spravato®) with other nasally administered medicinal products has been evaluated in the following pharmacokinetic interaction studies. Pretreatment of subjects with history of allergic rhinitis and pre-exposed to grass pollen with oxymetazoline administered as a nasal spray (2 sprays of 0.05% solution administered at 1 hour prior to nasal administration of esketamine) had minor effects on the pharmacokinetics of esketamine.

Pretreatment of healthy subjects with nasal administration of mometasone furoate (200 mcg per day for 2 weeks with the last mometasone furoate dose administered at 1 hour prior to nasal administration of esketamine) had minor effects on the pharmacokinetics of esketamine.

Effect of esketamine on other drugs

Nasal administration of 84 mg esketamine twice a week for 2 weeks reduced the mean plasma AUC_{∞} of oral midazolam (single 6 mg dose), a substrate of hepatic CYP3A4, by approximately 16%.

Nasal administration of 84 mg esketamine twice a week for 2 weeks did not affect the mean plasma AUC_{∞} of oral bupropion (single 150 mg dose), a substrate of hepatic CYP2B6.

PREGNANCY AND BREAST-FEEDING

Pregnancy

Esketamine (Spravato®) is not recommended during pregnancy. The risks of Esketamine (Spravato®) during pregnancy have not been studied. Human data in pregnant women during clinical trials with esketamine exposure are too limited to be conclusive. Animal studies with ketamine, the racemic mixture of arketamine and esketamine, show evidence of developmental neurotoxicity (see below). The potential for esketamine to have neurotoxic effects on fetuses cannot be excluded. To avoid exposing the fetus to esketamine, women of reproductive potential should be advised to use highly effective contraception during and up to 6 weeks after the last treatment with Esketamine (Spravato®). If a woman becomes pregnant while being treated with Esketamine (Spravato®), treatment with esketamine should be discontinued and the patient should be counseled about the potential risk to the fetus and clinical/therapeutic options as soon as possible.

Ketamine, the racemic mixture of arketamine and esketamine, administered intravenously at high anesthetic dose levels to female rats in the second trimester of pregnancy caused neuronal cell abnormalities in the brains of their offspring which showed behavioral changes and impaired memory up to young adult age. When female monkeys were treated intravenously with ketamine at high anesthetic dose levels in the third trimester of pregnancy, neuronal cell death was observed in the brains of their fetuses. Ketamine-induced neuronal cell death was also observed with early postnatal intraperitoneal or subcutaneous treatment of rat and mice pups, a period of rapid brain growth. This period of brain development translates into the third trimester of human pregnancy. In embryo-fetal developmental toxicity studies in rats, nasally-administered ketamine did not induce adverse findings in the offspring. Skeletal malformations were found in the offspring of rabbits nasally treated with ketamine. It cannot be excluded that esketamine induces neurotoxicity in developing fetuses (see **Non-Clinical Information**).

Breast-feeding

Esketamine (Spravato®) is not recommended in women who are breast-feeding. The risks of Esketamine (Spravato®) during breast-feeding have not been studied in humans. There are no data available to assess

the effects of esketamine on human milk production, its presence in human milk, or effects on the breastfed infant. Esketamine is expected to be excreted to human milk based on published data showing presence of ketamine in cow milk in cows exposed to intravenously-administered ketamine. Advise patients either not to undergo therapy with Esketamine (Spravato®) while breast-feeding or discontinue breast-feeding if treatment with Esketamine (Spravato®) is initiated, taking into account the importance of the drug to the mother. (See **Non-Clinical Information**)

EFFECTS ON ABILITY TO DRIVE AND USE MACHINES

Esketamine (Spravato®) has a major influence on the ability to drive and use machines. In clinical studies, Esketamine (Spravato®) has been reported to cause somnolence, sedation, dissociative symptoms, perception disturbances, dizziness, vertigo and anxiety (see **Undesirable Effects**). Before Esketamine (Spravato®) administration, instruct patients not to engage in potentially hazardous activities requiring complete mental alertness and motor coordination, such as driving a motor vehicle or operating machinery, until the next day following a restful sleep (see **Special Warnings and Special Precautions for Use** and **Clinical Studies**).

UNDESIRABLE EFFECTS

Throughout this section, adverse reactions are presented. Adverse reactions are adverse events that have been considered to be reasonably associated with the use of esketamine based on the comprehensive assessment of the available adverse event information. A causal relationship with esketamine cannot be reliably established in individual cases. Further, because clinical trials are conducted under widely varying conditions, adverse reaction rates observed in the clinical trials of a drug cannot be directly compared to rates in the clinical trials of another drug and may not reflect the rates observed in clinical practice.

Clinical trial data

Adverse Reactions from Clinical Studies in Treatment-Resistant Depression (TRD)

Esketamine (Spravato®) was evaluated for safety in 1709 patients diagnosed with TRD (patients with MDD and were non-responders to at least two oral antidepressants (ADs) treatments, of adequate dosage and duration, in the current major depressive episode) from five Phase 3 studies (3 short-term and 2 long-term studies) and one Phase 2 dose-ranging study. Of all esketamine-treated patients in the completed Phase 3 studies, 479 (29.9%) received at least 6 months of treatment exposure, and 178 (11.1%) received at least 12 months of exposure.

Adverse reactions in patients with Major Depressive Disorder with acute suicidal ideation or behavior

Esketamine (Spravato®) was evaluated for safety in 262 patients diagnosed with Major Depressive Disorder with suicidal ideation and intent from two Phase 3 studies and one Phase 2 study. Overall, the safety profile of Esketamine (Spravato®) from this clinical program was generally similar that seen in studies for TRD.

Adverse Events Reported as Reasons for Discontinuation of Treatment

In short-term studies in both adult (pooled TRD3001/TRD3002) and elderly (TRD3005) patients with TRD, the proportion of patients that received Esketamine (Spravato®) plus oral AD and discontinued treatment because of an adverse event was 4.6% for adult and 5.6% for elderly patients, respectively, compared to 1.4% for adult and 3.1% for elderly patients receiving oral AD plus placebo nasal spray. In a long-term study, the discontinuation rates because of an adverse event were similar for patients receiving Esketamine (Spravato®) plus oral AD and oral AD plus placebo nasal spray, 2.6% and 2.1%, respectively. Across all Phase 3 studies in TRD, adverse events leading to Esketamine (Spravato®) discontinuation in more than 2 patients (>0.1%) were (in order of frequency): anxiety, depression, blood pressure increased,

dizziness, suicidal ideation, dissociation, nausea, vomiting, headache, muscular weakness, vertigo, hypertension, panic attack and sedation.

In the pooled Phase 3 studies SUI3001/SUI3002, 6.2% (14/227) of patients diagnosed with Major Depressive Disorder with suicidal ideation and intent in the Esketamine (Spravato®) + SOC group and 3.6% (8/225) of patients in the placebo + SOC group experienced adverse events leading to discontinuation. Adverse events that led to discontinuation in >1 subject in the Esketamine (Spravato®) + SOC group were: dissociation, blood pressure increased, depersonalization/derealization disorder, and nausea.

Common Adverse Reactions

The most commonly observed adverse reactions in patients treated with Esketamine (Spravato®) plus oral AD (incidence ≥10% and greater than oral AD plus placebo nasal spray) were dissociation, dizziness, nausea, sedation, headache, dysgeusia, hypoesthesia, vertigo, anxiety, blood pressure increased, and vomiting. Most of these adverse reactions were mild or moderate in severity, reported post-dose on the day of administration and resolved the same day.

Table 8 shows the incidence of adverse reactions that occurred in patients treated with Esketamine (Spravato®) plus oral AD at any dose and greater than patients treated with oral AD plus placebo nasal spray.

Table 8: Adverse Reactions Occurring in patients treated with Esketamine (Spravato®) plus Oral AD at any dose and greater than patients treated with oral AD plus placebo nasal spray*

	Double-Blind Population		Open-Label Population	
	Esketamine (Spravato®) + Oral AD (N=849)	Oral AD + Placebo nasal spray (N=742)	Esketamine (Spravato®) + Oral AD (N=1335)	All Esketamine (Spravato®) Population (N=1971)
Psychiatric disorders				
Dissociation [†]	351 (41.3%)	67 (9.0%)	512 (38.4%)	821 (41.7%)
Anxiety [†]	108 (12.7%)	54 (7.3%)	161 (12.1%)	271 (13.7%)
Euphoric mood	41 (4.8%)	6 (4.8%)	51 (3.8%)	94 (4.8%)
Emotional distress [†]	26 (3.1%)	4 (0.5%)	33 (2.5%)	61 (3.1%)
Nervous system disorders				
Dizziness [†]	293 (34.5%)	71 (9.6%)	491 (36.8%)	747 (37.9%)
Sedation [†]	200 (23.6%)	66 (8.9%)	321 (24.0%)	510 (25.9%)
Headache [†]	172 (20.3%)	114 (15.4%)	294 (22.0%)	468 (23.7%)
Dysgeusia [†]	170 (20.0%)	88 (11.9%)	207 (15.5%)	350 (17.8%)
Hypoesthesia [†]	139 (16.4%)	11 (1.5%)	204 (15.3%)	321 (16.3%)
Lethargy [†]	64 (7.5%)	28 (3.8%)	97 (7.3%)	167 (8.5%)
Mental impairment [†]	39 (4.6%)	10 (1.3%)	61 (4.6%)	96 (4.9%)
Dysarthria [†]	21 (2.5%)	2 (0.3%)	37 (2.8%)	59 (3.0%)
Tremor [†]	19 (2.2%)	11 (1.5%)	28 (2.1%)	52 (2.6%)
Nystagmus	3 (0.4%)	0	10 (0.7%)	13 (0.7%)
Ear and labyrinth disorders				
Vertigo [†]	133 (15.7%)	17 (2.3%)	211 (15.8%)	321 (16.3%)

Cardiac disorders				
Tachycardia [†]	15 (1.8%)	4 (0.5%)	19 (1.4%)	36 (1.8%)
Respiratory, thoracic and mediastinal disorders				
Throat irritation [†]	71 (8.4%)	32 (4.3%)	117 (8.8%)	183 (9.3%)
Nasal discomfort [†]	60 (7.1%)	38 (5.1%)	96 (7.2%)	150 (7.6%)
Gastrointestinal disorders				
Nausea	218 (25.7%)	60 (8.1%)	321 (24.0%)	532 (27.0%)
Vomiting	82 (9.7%)	18 (2.4%)	123 (9.2%)	210 (10.7%)
Dry mouth	34 (4.0%)	14 (1.9%)	42 (3.1%)	79 (4.0%)
Salivary hypersecretion	7 (0.8%)	1 (0.2%)	5 (0.4%)	11 (0.6%)
Skin and subcutaneous tissue disorders				
Hyperhidrosis [†]	36 (4.2%)	11 (1.5%)	56 (4.2%)	96 (4.9%)
Renal and urinary disorders				
Pollakiuria [†]	21 (2.5%)	6 (0.8%)	43 (3.2%)	65 (3.3%)
Dysuria	10 (1.2%)	0	29 (2.2%)	39 (2.0%)
General disorders and administration site conditions				
Feeling drunk	32 (3.8%)	2 (0.3%)	31 (2.3%)	60 (3.0%)
Feeling abnormal	29 (3.4%)	4 (0.5%)	53 (4.0%)	77 (3.9%)
Asthenia	11 (1.3%)	3 (0.4%)	38 (2.8%)	49 (2.5%)
Gait disturbance	5 (0.6%)	2 (0.3%)	6 (0.4%)	11 (0.6%)
Investigations				
Blood pressure increased [†]	105 (12.4%)	34 (4.6%)	166 (12.4%)	258 (13.1%)

* Note: The following studies are included in the Double-Blind Population: TRD2003 (Double-Blind Phase), TRD3001, TRD3002, TRD3003 (Maintenance Phase), TRD3005, SUI2001, SUI3001, SUI3002. The following studies are included in the Open-Label Population: TRD2003 (Open-Label Phase), TRD3003 (Induction and Optimization Data from Direct-Entry patients), TRD3004. The 'All Esketamine (Spravato®) Population' includes all patients in the Esketamine (Spravato®) arm in any phase in TRD2003, TRD3001, TRD3002, TRD3003, TRD3004, TRD3005, SUI2001, SUI3001, SUI3002.

† The following terms were combined:

Dissociation includes: dissociation; depersonalization/derealization disorder; derealization; dissociative disorder; flashback; hallucination; hallucination, auditory; hallucination, visual; illusion; somatic hallucination; hallucinations, mixed; hyperacusis; tinnitus; diplopia; vision blurred; ocular discomfort; photophobia; visual impairment; dysesthesia; oral dysesthesia; paresthesia; paresthesia oral; pharyngeal paresthesia; time perception altered; daydreaming; delusional perception; feeling hot; feeling cold; feeling of body temperature change.

Anxiety includes: anxiety; anticipatory anxiety; anxiety disorder; generalized anxiety disorder; agitation; fear; nervousness; tension; panic attack; panic disorder; panic reaction; feeling jittery; irritability; psychogenic tremor; psychomotor hyperactivity.

Emotional distress includes: emotional distress; crying; dysphoria.

Dizziness includes: dizziness; dizziness postural; procedural dizziness; dizziness exertional.

Sedation includes: sedation; somnolence; altered state of consciousness; depressed level of consciousness; hypersomnia; stupor.

Headache includes: headache; sinus headache.

Dysgeusia includes: dysgeusia; hypogeusia.

Hypoesthesia includes: hypoesthesia; hypoesthesia oral; hypoesthesia teeth; pharyngeal hypoesthesia; intranasal hypoesthesia.

Lethargy includes: lethargy; fatigue; listless; psychomotor retardation.

Mental impairment includes: mental impairment; confusional state; disturbance in attention

Dysarthria includes: dysarthria; speech disorder; slow speech.

Tremor includes: tremor; intention tremor.

Vertigo includes: vertigo; vertigo positional.

Tachycardia includes: sinus tachycardia; tachycardia; heart rate increased; extrasystole.

Nasal discomfort includes: nasal discomfort; nasal crusting; nasal dryness; nasal pruritus

Throat irritation includes: throat irritation; oropharyngeal pain.

Hyperhidrosis includes: hyperhidrosis; cold sweat.

Pollakiuria includes: pollakiuria; micturition disorder; micturition urgency.

Blood pressure increased includes: blood pressure increased; blood pressure systolic increased; blood pressure diastolic increased; hypertension; hypertensive heart disease; hypertensive crisis.

Dissociation/perceptual changes

The most common psychological effects of esketamine have been dissociative/perceptual changes (including distortion of time and space and illusions), derealization and depersonalization. These adverse reactions were reported as transient and self-limited and occurred on the day of dosing. Dissociation was reported as severe in intensity at the incidence of less than 4% across studies. Dissociation symptoms typically resolved by 1.5 hours post-dose and the severity tended to reduce over time with repeated treatments.

Sedation/somnolence

Adverse reactions of sedation and somnolence were primarily mild or moderate in severity, occurred on the day of dosing and resolved spontaneously the same day. Sedative effects typically resolved by 1.5 hours post-dose. Rates of somnolence were relatively stable over time during long-term treatment. In the cases of sedation, no symptoms of respiratory distress were observed, and hemodynamic parameters (including vital signs and oxygen saturation) remained within normal ranges. During post-marketing use, respiratory depression has been observed in isolated cases with the use of Esketamine (Spravato®) in combination with other CNS depressants and in patients with comorbidities such as obesity, anxiety, cardiovascular and respiratory conditions, though causality has not been established. These events were transient in nature and resolved after verbal/tactile stimulation or supplemental oxygen.

Impaired cognition

In the short-term studies, treatment with Esketamine (Spravato®) plus oral AD did not influence any aspect of cognition studied in adult patients with TRD and was not associated with any systematic changes in cognition in the elderly patients. Consistently, in long-term studies, performance on each of the cognitive tests relative to baseline showed slight improvement or remained stable in each treatment phase. In the elderly subgroup (≥65 years of age) slowing of reaction time starting at Week 20 and through the end of the study was observed, however, performance on other cognitive tests remained stable.

Changes in blood pressure

The mean placebo-adjusted increases in systolic and diastolic blood pressure (SBP and DBP) over time were about 7 to 9 mmHg in SBP and 4 to 6 mmHg in DBP at 40 minutes post-dose and 2 to 5 mmHg in SBP and 1 to 3 mmHg in DBP at 1.5 hours post-dose in patients receiving Esketamine (Spravato®) plus oral antidepressants.

Table 9: Increases in Blood Pressure in Double-blind, Randomized-controlled, Short-term Trials of Esketamine (Spravato®) + Oral AD Compared to Placebo Nasal Spray + Oral AD in the Treatment of TRD

	Patients <65 years		Patients ≥65 years	
	Esketamine (Spravato®) + Oral AD N=346	Placebo + Oral AD N=222	Esketamine (Spravato®) + Oral AD N=72	Placebo + Oral AD N=65
Systolic blood pressure				
≥180 mmHg	9 (3%)	---	2 (3%)	1 (2%)
≥40 mmHg increase	29 (8%)	1 (0.5%)	12 (17%)	1 (2%)
Diastolic blood pressure				
≥110 mmHg	13 (4%)	1 (0.5%)	---	---
≥25 mmHg increase	46 (13%)	6 (3%)	10 (14%)	2 (3%)

Nausea and vomiting

Esketamine (Spravato®) can cause nausea and vomiting (Table 10). Most of these events occurred on the day of dosing and resolved the same day, with the median duration not exceeding 1 hour in most subjects across dosing sessions. Rates of reported nausea and vomiting decreased over time across dosing sessions from the first week of treatment in the short-term studies, as well as over time with long-term treatment.

Table 10: Incidence and Severity of Nausea and Vomiting in Double-blind, Randomized-controlled, Fixed-dose Study

Treatment (+ Oral AD)	N	Nausea		Vomiting	
		All	Severe	All	Severe
Esketamine (Spravato®) 56 mg	115	31 (27%)	0	7 (6%)	0
Esketamine (Spravato®) 84 mg	116	37 (32%)	4 (3%)	14 (12%)	3 (3%)
Placebo Nasal Spray	113	12 (11%)	0	2 (2%)	0

Nasal tolerability and sense of smell

Across studies, the vast majority of esketamine-treated patients had no findings on nasal examination. For the patients who had nasal findings (including nasal discharge, nasal crust, or nasal erythema) all

events were of mild severity with the exception of a few moderate findings. The most frequently reported post-dose nasal symptoms of moderate or severe intensity (reported in at least 5% of patients) in the Phase 3 studies were post-nasal drip, taste disturbance and stuffy nose. Other nasal symptoms of moderate or severe intensity included: runny nose, cough, dryness inside nose and sneezing. In addition, sense of smell was assessed over time; no difference was observed between patients treated with Esketamine (Spravato[®]) plus oral AD and those treated with oral AD plus placebo nasal spray during the double-blind maintenance phase of TRD3003.

Body weight

Esketamine (Spravato[®]) had no clinically meaningful effect on body weight over short- or long-term administration. In the double-blind maintenance phase of TRD3003, the proportion of patients with an increase in body weight of $\geq 7\%$ was comparable for the Esketamine (Spravato[®]) plus oral AD vs oral AD plus placebo nasal spray groups (13.9% and 13.3%). In the open-label, long-term study TRD3004, a similar percentage of patients exhibited an increase or decrease in body weight of $\geq 7\%$ (7.4% and 9.1%, respectively). In TRD3004, mean body weight remained stable during treatment with Esketamine (Spravato[®]) plus oral AD both in the induction phase and maintenance phase (mean change from baseline \pm standard deviation of -0.29 ± 2.15 kg at Day 28 and 0.44 ± 5.83 kg at Week 48).

Laboratory values

Esketamine (Spravato[®]) has not been associated with any clinically important changes to laboratory parameters in serum chemistry, hematology, or urinalysis.

OVERDOSE

No cases of overdose were reported in clinical studies with Esketamine (Spravato[®]). The potential for overdose of Esketamine (Spravato[®]) by the patient is minimized due to the product's design and the administration taking place under the supervision of a healthcare professional (*see Dosage and Method of Administration*).

Symptoms and signs

There is limited clinical trial experience with esketamine nasal spray doses higher than the maximum recommended dose of 84 mg. The maximum single esketamine nasal spray dose tested in healthy volunteers was 112 mg which showed no evidence of toxicity and/or adverse clinical outcomes. However, compared to the recommended dose range, the 112-mg esketamine nasal spray dose was associated with higher rates of adverse reactions including dizziness, hyperhidrosis, somnolence, hypoesthesia, feeling abnormal, nausea and vomiting.

Treatment

There is no specific antidote for esketamine overdose. In the case of overdose, the possibility of multiple drug involvement should be considered. It is advisable to contact a poison control center to obtain the latest recommendations for the management of an overdose. Management of Esketamine (Spravato[®]) overdose should consist of treating clinical symptoms and relevant monitoring. Close supervision and monitoring should continue until the patient recovers.

AVAILABILITY

Each nasal spray device containing 2 sprays equivalent to 28 mg of esketamine:

28 mg Dose Kit: Unit-dose carton containing one 28 mg nasal spray devices (28 mg total dose)

56 mg Dose Kit: Unit-dose carton containing two 28 mg nasal spray devices (56 mg total dose)

84 mg Dose Kit: Unit-dose carton containing three 28 mg nasal spray devices (84 mg total dose)

STORAGE CONDITION

Store at temperatures not exceeding 30°C.
Keep out of the sight and reach of children.

CAUTION

Foods, Drugs, Devices and Cosmetics Act prohibits dispensing without prescription.

Patient must seek medical attention immediately at the first sign of any adverse drug reaction. For suspected adverse drug reaction, report to the FDA: www.fda.gov.ph.

Questions or comments? Email us at Janssendrugsafety_Phil@its.jnj.com.

Dangerous Drug - To be prescribed by a PDEA S-2 licensed practitioner in a personalized triplicate ordinary prescription form. It is a habit-forming drug.

DATE OF FIRST AUTHORIZATION

16 December 2021

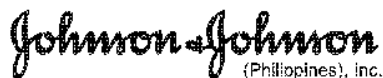
REGISTRATION NUMBER

DR-XY47611

MANUFACTURED BY

Renaissance Lakewood LLC
1200 Paco Way
Lakewood, New Jersey
USA

IMPORTED BY

 **Johnson & Johnson**
(Philippines), inc.

KM 14 Edison Road, Merville,
Parañaque City

Revision date : 02 August 2022 (based on CCDS v008, 05 May 2022)