

## **BIMATOPROST**

**LUMIGAN® 0.1mg/mL (0.01%)**  
**Sterile Ophthalmic Solution**  
**Anti-Glaucoma**

### **HIGHLIGHTS OF PRESCRIBING INFORMATION**

These highlights do not include all the information needed to use Bimatoprost (LUMIGAN®) 0.01% ophthalmic solution safely and effectively. See full prescribing information for Bimatoprost (LUMIGAN®) 0.01%.

Bimatoprost (LUMIGAN®) **0.01% ophthalmic solution Initial U.S. Approval: 2001**

### **INDICATIONS AND USAGE**

Bimatoprost (LUMIGAN®) 0.01% is a prostaglandin analog indicated for the reduction of elevated intraocular pressure in patients with open angle glaucoma or ocular hypertension. (1)

### **DOSAGE AND ADMINISTRATION**

One drop in the affected eye(s) once daily in the evening. (2)

### **DOSAGE FORMS AND STRENGTHS**

Solution containing 0.1 mg/mL bimatoprost. (3)

### **WARNINGS AND PRECAUTIONS**

- **Pigmentation.**  
Pigmentation of the iris, periorbital tissue (eyelid) and eyelashes can occur (5.1). Iris pigmentation likely to be permanent.
- **Eyelash Changes.**  
Gradual change to eyelashes including increased length, thickness and number of lashes. Usually reversible. (5.2)

### **ADVERSE REACTIONS**

Most common adverse reaction (29%) is conjunctival hyperemia. (6.1)

### **USE IN SPECIFIC POPULATIONS**

Use in pediatric patients below the age of 16 years is not recommended because of potential safety concerns related to increased pigmentation following long-term chronic use. (7.3)

**See 16 for Patient Counseling Information. Revised: April 2014**

### **FULL PRESCRIBING INFORMATION: CONTENTS\***

- 1. INDICATIONS AND USAGE**
- 2. DOSAGE AND ADMINISTRATION**
- 3. DOSAGE FORMS AND STRENGTHS**
- 4. CONTRAINDICATIONS**

## **5. WARNINGS AND PRECAUTIONS**

- 5.1 Pigmentation
- 5.2 Eyelash Changes
- 5.3 Intraocular Inflammation
- 5.4 Macular Edema
- 5.5 Inflammatory Conditions or Other Glaucoma
- 5.6 Use with Prostaglandin Analogs
- 5.7 Potential for Hair Growth Outside Treatment Area
- 5.8 Bacterial Keratitis
- 5.9 Use with Contact Lenses

## **6. ADVERSE REACTIONS**

- 6.1 Clinical Studies Experience
- 6.2 Postmarketing Experience

## **7. USE IN SPECIFIC POPULATIONS**

- 7.1 Pregnancy
- 7.2 Nursing Mothers
- 7.3 Pediatric Use
- 7.4 Geriatric Use
- 7.5 Hepatic Impairment

## **8. DRUG INTERACTIONS**

## **9. OVERDOSAGE**

## **10. EFFECTS ON ABILITY TO DRIVE AND USE MACHINERY**

## **11. DESCRIPTION**

## **12. CLINICAL PHARMACOLOGY**

- 12.1 Mechanism of Action
- 12.2 Pharmacokinetics

## **13. NONCLINICAL TOXICOLOGY**

- 13.1 Carcinogenesis, Mutagenesis, Impairment of Fertility

## **14. CLINICAL STUDIES**

## **15. HOW SUPPLIED/STORAGE AND HANDLING**

## **16. PATIENT COUNSELING INFORMATION**

- 16.1 Potential for Pigmentation
- 16.2 Potential for Eyelash Changes
- 16.3 Handling the Container
- 16.4 When to Seek Physician Advice
- 16.5 Use with Contact Lenses
- 16.6 Use with Other Ophthalmic Drugs

## **FULL PRESCRIBING INFORMATION**

### **1. INDICATIONS AND USAGE**

Bimatoprost (LUMIGAN®) 0.01% (bimatoprost ophthalmic solution) is indicated for the reduction of elevated intraocular pressure in patients with open angle glaucoma or ocular hypertension.

### **2. DOSAGE AND ADMINISTRATION**

The recommended dosage is one drop in the affected eye(s) once daily in the evening. Bimatoprost (LUMIGAN®) 0.01% (bimatoprost ophthalmic solution) should not be administered more than once daily

since it has been shown that more frequent administration of prostaglandin analogs may decrease the intraocular pressure lowering effect.

Reduction of the intraocular pressure starts approximately 4 hours after the first administration with maximum effect reached within approximately 8 to 12 hours.

Bimatoprost (LUMIGAN®) 0.01% may be used concomitantly with other topical ophthalmic drug products to lower intraocular pressure. If more than one topical ophthalmic drug is being used, the drugs should be administered at least five (5) minutes apart.

### **3. DOSAGE FORMS AND STRENGTHS**

Ophthalmic solution containing bimatoprost 0.1 mg/mL.

### **4. CONTRAINDICATIONS**

Bimatoprost (LUMIGAN®) 0.01% is contraindicated in patients with clinically significant hypersensitivity to bimatoprost or to any of the excipients.

### **5. WARNINGS AND PRECAUTIONS**

#### **5.1 Pigmentation**

Bimatoprost ophthalmic solution has been reported to cause changes to pigmented tissues. The most frequently reported changes have been increased pigmentation of the iris, periorbital tissue (eyelid) and eyelashes. Pigmentation is expected to increase as long as bimatoprost is administered. The pigmentation change is due to increased melanin content in the melanocytes rather than to an increase in the number of melanocytes. After discontinuation of bimatoprost, pigmentation of the iris is likely to be permanent, while pigmentation of the periorbital tissue and eyelash changes have been reported to be reversible in some patients. Patients who receive treatment should be informed of the possibility of increased pigmentation. The long term effects of increased pigmentation are not known.

Iris color change may not be noticeable for several months to years. Typically, the brown pigmentation around the pupil spreads concentrically towards the periphery of the iris and the entire iris or parts of the iris become more brownish. Neither nevi nor freckles of the iris appear to be affected by treatment. While treatment with Bimatoprost (LUMIGAN®) 0.01% (bimatoprost ophthalmic solution) can be continued in patients who develop noticeably increased iris pigmentation, these patients should be examined regularly. (see PATIENT COUNSELING INFORMATION, 16.1).

#### **5.2 Eyelash Changes**

Before treatment is initiated, patients should be informed of the possibility of eyelash growth since this has been observed during treatment with prostaglandin analogues, including Bimatoprost (LUMIGAN®).

Bimatoprost (LUMIGAN®) 0.01% may gradually change eyelashes and vellus hair in the treated eye. These changes include increased length, thickness, and number of lashes. Eyelash changes are usually reversible upon discontinuation of treatment.

#### **5.3 Intraocular Inflammation**

Bimatoprost (LUMIGAN®) 0.01% should be used with caution in patients with active intraocular inflammation (e.g., uveitis) because the inflammation may be exacerbated.

## **5.4 Macular Edema**

Macular edema, including cystoid macular edema, has been reported during treatment with bimatoprost ophthalmic solution.

Bimatoprost (LUMIGAN®) 0.01% should be used with caution in aphakic patients, in pseudophakic patients with a torn posterior lens capsule, or in patients with known risk factors for macular edema (e.g. intraocular surgery, retinal vein occlusions, ocular inflammatory disease and diabetic retinopathy).

## **5.5 Inflammatory Conditions or Other Glaucoma**

Bimatoprost (LUMIGAN®) 0.01% has not been evaluated in patients with inflammatory ocular conditions, angle- closure, inflammatory or neovascular glaucoma, congenital glaucoma or narrow-angle glaucoma.

## **5.6 Use with Prostaglandin Analogs**

In Bimatoprost (LUMIGAN®) 0.03% studies in patients with glaucoma or ocular hypertension, it has been shown that more frequent exposure of the eye to more than one dose of bimatoprost daily may decrease the IOP- lowering effect. Patients using Bimatoprost (LUMIGAN®) with other prostaglandin analogs should be monitored for changes to their intraocular pressure.

## **5.7 Potential for Hair Growth Outside Treatment Area**

There is the potential for hair growth to occur in areas where Bimatoprost (LUMIGAN®) 0.01% solution comes repeatedly in contact with the skin surface. Thus, it is important to apply Bimatoprost (LUMIGAN®) 0.01% as instructed and to avoid it running onto the cheek or other skin areas.

## **5.8 Bacterial Keratitis**

There have been reports of bacterial keratitis associated with the use of multiple-dose containers of topical ophthalmic products. These containers had been inadvertently contaminated by patients who, in most cases, had a concurrent ocular disease. Patients with a disruption of the ocular epithelial surface are at greater risk of developing bacterial keratitis (see PATIENT COUNSELING INFORMATION, 16.3).

## **5.9 Use with Contact Lenses**

Bimatoprost (LUMIGAN®) 0.01% contains benzalkonium chloride, which may be absorbed by and cause discoloration of soft contact lenses. Contact lenses should be removed prior to instillation of Bimatoprost (LUMIGAN®) 0.01% and may be reinserted 15 minutes following its administration.

# **6. ADVERSE REACTIONS**

## **6.1 Clinical Studies Experience**

Because clinical studies are conducted under widely varying conditions, adverse reaction rates observed in the clinical studies of a drug cannot be directly compared to rates in the clinical studies of another drug and may not reflect the rates observed in practice.

In a clinical study with bimatoprost ophthalmic solution 0.01%, the most common adverse reaction was conjunctival hyperemia (29%). Approximately 1.6% of patients discontinued therapy due to conjunctival hyperemia with bimatoprost ophthalmic solution 0.01%.

Additional ocular adverse reactions (reported in 1 to 10% of patients) with bimatoprost ophthalmic solution 0.01% included erythema of eyelid, eye irritation, eye pruritus, eyelids pruritus, growth of eyelashes, and punctate keratitis.

Other non-ocular adverse reactions (reported in 1 to 10%) included hypertrichosis, instillation site irritation, and skin hyperpigmentation.

## **6.2 Postmarketing Experience**

The following adverse reactions have been identified during postmarketing use of Bimatoprost (LUMIGAN®) 0.01% in clinical practice. Because they are reported voluntarily from a population of unknown size, estimates of frequency cannot be made. The events, which have been chosen for inclusion due to either their seriousness, frequency of reporting, possible causal connection to Bimatoprost (LUMIGAN®) 0.01% or a combination of these factors, include: eye pain, vision blurred, headache, asthma, exacerbation of asthma, dyspnea, blepharal pigmentation, Iris hyperpigmentation, Periorbital and lid changes associated with periorbital fat atrophy and skin tightness resulting in deepening of eyelid sulcus, eyelid ptosis, enophthalmos and eyelid retraction, macular edema, dry eye, eye discharge, eye edema, eyelid edema, foreign body sensation in eyes, lacrimation increased, dizziness, hypertension, ocular discomfort, photophobia.

Hypersensitivity reaction including signs and symptoms of eye allergy and allergic dermatitis.

## **7. USE IN SPECIFIC POPULATIONS**

### **7.1 Pregnancy**

Pregnancy Category C

Teratogenic effects: In embryo/fetal developmental studies in pregnant mice and rats, abortion was observed at oral doses of bimatoprost which achieved at least 33 or 97 times, respectively, the maximum intended human exposure based on blood AUC levels.

At doses at least 41 times the maximum intended human exposure based on blood AUC levels, the gestation length was reduced in the dams, the incidence of dead fetuses, late resorptions, peri- and postnatal pup mortality was increased, and pup body weights were reduced.

There are no adequate and well-controlled studies of Bimatoprost (LUMIGAN®) 0.01% (bimatoprost ophthalmic solution) administration in pregnant women. Because animal reproductive studies are not always predictive of human response Bimatoprost (LUMIGAN®) 0.01% should be administered during pregnancy only if the potential benefit justifies the potential risk to the fetus.

### **7.2 Nursing Mothers**

It is not known whether Bimatoprost (LUMIGAN®) 0.01% is excreted in human milk, although in animal studies, bimatoprost has been shown to be excreted in breast milk. Because many drugs are excreted in human milk, caution should be exercised when Bimatoprost (LUMIGAN®) 0.01% is administered to a nursing woman.

### **7.3 Pediatric Use**

Use in pediatric patients has not been evaluated and therefore use is not recommended in children or adolescents.

#### **7.4 Geriatric Use**

No overall clinical differences in safety or effectiveness have been observed between elderly and other adult patients.

#### **7.5 Hepatic Impairment**

Bimatoprost (LUMIGAN®) has not been studied in patients with moderate to severe hepatic impairment and should therefore be used with caution in such patients. In patients with a history of liver disease or abnormal ALT, AST and/or bilirubin at baseline, bimatoprost 0.03% had no adverse effect on liver function over 48 months.

#### **7.6 Renal Impairment**

There are no data specific for this patient population and the product should therefore be used with caution in such patients.

#### **7.7 Compromised Respiratory Function**

Bimatoprost (LUMIGAN®) has not been studied in patients with compromised respiratory function and should therefore be used with caution in such patients.

### **8. DRUG INTERACTIONS**

No interaction studies have been performed. There is a potential for the IOP-lowering effect of prostaglandin analogs [e.g., Bimatoprost (LUMIGAN®)] to be reduced in patients with glaucoma or ocular hypertension when used with other prostaglandin analogs (see Warnings and Precautions, 5).

### **9. OVERDOSAGE**

No information is available on overdosage in humans. If overdose with Bimatoprost (LUMIGAN®) 0.01% (bimatoprost ophthalmic solution) occurs, treatment should be symptomatic.

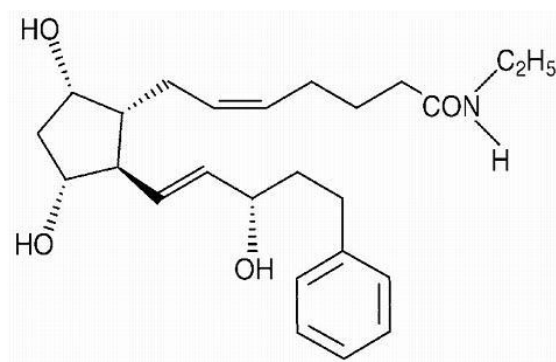
In oral (by gavage) mouse and rat studies, doses up to 100 mg/kg/day did not produce any toxicity. This dose expressed as mg/m<sup>2</sup> is at least 160 times higher than the accidental dose of one bottle of Bimatoprost (LUMIGAN®) 0.01% for a 10 kg child.

### **10. EFFECTS ON ABILITY TO DRIVE AND USE MACHINES**

As with any ocular treatment, if transient blurred vision occurs at instillation, the patient should wait until the vision clears before driving or using machinery.

### **11. DESCRIPTION**

Bimatoprost (LUMIGAN®) 0.01% (bimatoprost ophthalmic solution) is a synthetic prostaglandin analog with ocular hypotensive activity. Its chemical name is (Z)-7-[(1R,2R,3R,5S)-3,5-Dihydroxy-2-[(1E,3S)-3-hydroxy-5-phenyl-1-pentenyl]cyclopentyl]-5-N-ethylheptenamide, and its molecular weight is 415.58. Its molecular formula is C<sub>25</sub>H<sub>37</sub>NO<sub>4</sub>. Its chemical structure is:



Bimatoprost is a powder, which is very soluble in ethyl alcohol and methyl alcohol and slightly soluble in water. Bimatoprost (LUMIGAN®) 0.01% is a clear, isotonic, colorless, sterile ophthalmic solution with an osmolality of approximately 290 mOsmol/kg.

Bimatoprost (LUMIGAN®) 0.01% contains **Active:** bimatoprost 0.1 mg/mL; **Preservative:** benzalkonium chloride 0.2 mg/mL; **Inactives:** sodium chloride; sodium phosphate, dibasic; citric acid; and purified water. Sodium hydroxide and/or hydrochloric acid may be added to adjust pH. The pH during its shelf life ranges from 6.8-7.8.

## 12. CLINICAL PHARMACOLOGY

### 12.1 Mechanism of Action

Bimatoprost, a prostaglandin analog, is a synthetic structural analog of prostaglandin with ocular hypotensive activity. It selectively mimics the effects of naturally occurring substances, prostamides. Bimatoprost is believed to lower intraocular pressure (IOP) in humans by increasing outflow of aqueous humor through both the trabecular meshwork and uveoscleral routes. Elevated IOP presents a major risk factor for glaucomatous field loss. The higher the level of IOP, the greater the likelihood of optic nerve damage and visual field loss.

### 12.2 Pharmacokinetics

**Absorption:** After one drop of bimatoprost ophthalmic solution 0.03% was administered once daily to both eyes of 15 healthy subjects for two weeks, blood concentrations peaked within 10 minutes after dosing and were below the lower limit of detection (0.025 ng/mL) in most subjects within 1.5 hours after dosing. Mean  $C_{max}$  and  $AUC_{0-24hr}$  values were similar on days 7 and 14 at approximately 0.08 ng/mL and 0.09 ng•hr/mL, respectively, indicating that steady state was reached during the first week of ocular dosing. There was no significant systemic drug accumulation over time.

**Distribution:** Bimatoprost is moderately distributed into body tissues with a steady-state volume of distribution of 0.67 L/kg. In human blood, bimatoprost resides mainly in the plasma. Approximately 12% of bimatoprost remains unbound in human plasma.

**Metabolism:** Bimatoprost is the major circulating species in the blood once it reaches the systemic circulation following ocular dosing. Bimatoprost then undergoes oxidation, N-deethylation and glucuronidation to form a diverse variety of metabolites.

**Elimination:** Following an intravenous dose of radiolabeled bimatoprost (3.12 µg/kg) to six healthy subjects, the maximum blood concentration of unchanged drug was 12.2 ng/mL and decreased rapidly with an elimination half-life of approximately 45 minutes. The total blood clearance of bimatoprost was

1.5 L/hr/kg. Up to 67% of the administered dose was excreted in the urine while 25% of the dose was recovered in the feces.

### **13. NONCLINICAL TOXICOLOGY**

#### **13.1 Carcinogenesis, Mutagenesis, Impairment of Fertility**

Bimatoprost was not carcinogenic in either mice or rats when administered by oral gavage at doses of up to 2 mg/kg/day and 1 mg/kg/day respectively (at least 192 and 291 times the recommended human exposure based on blood AUC levels respectively) for 104 weeks.

Bimatoprost was not mutagenic or clastogenic in the Ames test, in the mouse lymphoma test, or in the in vivo mouse micronucleus tests.

Bimatoprost did not impair fertility in male or female rats up to doses of 0.6 mg/kg/day (at least 103 times the recommended human exposure based on blood AUC levels).

### **14. CLINICAL STUDIES**

In a 3 month clinical study of patients with open angle glaucoma or ocular hypertension with an average baseline IOP of 23.5 mmHg, the IOP-lowering effect of Bimatoprost (LUMIGAN®) 0.01% once daily (in the evening) was up to 7.5 mmHg. In this same study, Bimatoprost (LUMIGAN®) 0.01% also had a similar overall safety profile compared with Bimatoprost (LUMIGAN®) 0.03%. After 12 months of treatment, discontinuations were 8.1% for Bimatoprost (LUMIGAN®) 0.01%.

### **15. HOW SUPPLIED/STORAGE AND HANDLING**

Bimatoprost (LUMIGAN®) 0.01% (bimatoprost ophthalmic solution) is supplied sterile in opaque white low density polyethylene ophthalmic dispenser bottles and tips with turquoise polystyrene caps in the following sizes: 3 mL fill in a 5 mL container.

Storage: Bimatoprost (LUMIGAN®) 0.01% should be stored below 30°C. Discard unused contents 4 weeks after opening.

### **16. PATIENT COUNSELING INFORMATION**

#### **16.1 Potential for Pigmentation**

Patients should be advised about the potential for increased brown pigmentation of the iris, which may be permanent. Patients should also be informed about the possibility of eyelid skin darkening, which may be reversible after discontinuation of Bimatoprost (LUMIGAN®) 0.01% (bimatoprost ophthalmic solution).

#### **16.2 Potential for Eyelash Changes**

Patients should also be informed of the possibility of eyelash and vellus hair changes in the treated eye during treatment with Bimatoprost (LUMIGAN®) 0.01%. These changes may result in a disparity between eyes in length, thickness, pigmentation, number of eyelashes or vellus hairs, and/or direction of eyelash growth. Eyelash changes are usually reversible upon discontinuation of treatment. Before treatment is initiated, patients should be informed of the possibility of eyelash growth since this has been observed during treatment with prostaglandin analogues, including Bimatoprost (LUMIGAN®).

#### **16.3 Handling the Container**



Patients should be instructed to avoid allowing the tip of the dispensing container to contact the eye, surrounding structures, fingers, or any other surface in order to avoid eye injury and contamination of the solution by common bacteria known to cause ocular infections. Serious damage to the eye and subsequent loss of vision may result from using contaminated solutions.

#### **16.4 When to Seek Physician Advice**

Patients should also be advised that if they develop an intercurrent ocular condition (e.g., trauma or infection), have ocular surgery, or develop any ocular reactions, particularly conjunctivitis and eyelid reactions, they should immediately seek their physician's advice concerning the continued use of Bimatoprost (LUMIGAN®) 0.01%.

#### **16.5 Use with Contact Lenses**

Patients should be advised that Bimatoprost (LUMIGAN®) 0.01% contains benzalkonium chloride, which may be absorbed by and cause discoloration of soft contact lenses. Contact lenses should be removed prior to instillation of Bimatoprost (LUMIGAN®) 0.01% and may be reinserted 15 minutes following its administration.

#### **16.6 Use with Other Ophthalmic Drugs**

If more than one topical ophthalmic drug is being used, the drugs should be administered at least five (5) minutes between applications.

#### **Storage conditions:**

Store at temperatures not exceeding 30°C. Product can be used 28 days after the first opening.

CCDS v. 13

#### **DR-XY42784**

For suspected adverse drug reaction, report to the FDA: [www.fda.gov.ph](http://www.fda.gov.ph) Seek medical attention at first sign of ADR.

**CAUTION:** Foods, Drugs, Devices and Cosmetics Act prohibits dispensing without prescription.

Date of Revision: June 2021

First Authorization Date: October 2013

Manufactured by: Allergan Pharmaceuticals Ireland, Castlebar Road, Westport, County Mayo, Ireland  
Imported and distributed by: ZUELLIG PHARMA CORP.  
Km. 14 West Service Road, South Super Hi-way cor. Edison Ave., Brgy. Sun Valley, Paranaque City

© 2021 Allergan. All rights reserved. All trademarks are the property of their respective owners.